

BUGLE

Published by
Kurow Information Centre
as a service to our community



Issue 573
Wednesday
1 November 2023



HAKATARAMEA RAILWAY HOUSE

WAITAKI VALLEY COMMUNITY CAR



PHONE
4360 950
Mon-Fri

Not all our drives are for hospital appointments but it is an important part of what we do.



We welcome the opportunity to offer you a review on your business, personal or farm insurances.

Talk to the team at your local Aon Oamaru branch on

03 434 0080

10 Coquet Street, Oamaru

TO BOOK A COMMUNITY CAR: 03 4360 950

BUGLE PUBLICATION:

The Bugle is at the Kurow Information Centre - Please send your pieces to kurowbugle@gmail.com and please ensure they are in by strictly 12pm on the Friday before publication or they won't be in until the following issue.

ST JOHN MORNING TEA:

Held on the second Tuesday of every month @ 10am in the St John rooms on Gordon Street. Please phone Trish if you need a ride: 027 472 2674

KUROW FESTIVAL COMMITTEE:

The Market Day Committee are putting a request out to the farming community that when purchasing tail marking spray would they please consider purchasing an extra can to donate for the Committee to use to mark out stall sites. Any donated cans are to be left with Chrissy Watherston at the Vets.



WAITAKI VALLEY
COMMUNITY SOCIETY

Waitaki Valley Community Society AGM will be held on November 29th, 2023 at 7pm In the Back Bar at Kurow Hotel

Nomination forms are available from the Information Centre and must be received by 3pm, November 27th.

The role of Chairperson is needing to be filled

Apologies to Kurow Info Centre: **4360 950** or **wvcsociety@gmail.com**

Kurow Wetland Group

It's been a very busy few weeks with lots of grass mowing in the wetland.! The recent very windy weather meant small sticks and some smaller branches fell on to the track. We have cleaned up the sticks and branches and thank those of you who contacted us to let us know of the damage. The wetland is full of Crack Willow but a lot have been removed making it safer for people and better for the surrounding environment. We have a certified arborist who comes and takes care of any big branches that may cause concern.

We have removed the gate near the entrance as feedback from the public was they preferred it gone. By removing that barrier it now has a nice flow.

The Kurow wetland was part of the Waitaki Whitestone Geopark Festival last weekend. It was nice to be able to show people through the wetland and talk about what it use to look like and the plans going forward.



We have a Kakabeak and some Kowhais in flower at present.

Enjoy

Karen Turner 021 1908875
Rosina Russell 027 2280677

Expressions of Interest Sought for Purchase of Stunning Hakataramea Property With Land Area of 6394sq M

4 Bedroom house, 2 bathrooms, Large lounge, Dining Room, Kitchen, Storeroom,
New Kitchen Appliances, Solid Oak Kitchen Joinery, Coal Range (wetback connected),
Under Floor Heating in Dining Room, Lounge Wood Burner (25KW) (wetback connected),
2 Exterior Entertainment Areas, Spa Pool with Shower

House Exterior is Clad in Oamaru Stone with New Long-run Coloursteel Roofing
Large Garden Area with Rabbit-Proof Fencing surrounding Vegetable Garden,
2 Car Garaging and Large Double Garage Workshop,
2 Chicken Houses and Run, Store Sheds and Hay Shed,
Large Variety of Fruit Trees, 40+ Hazelnut Trees Generating a Small Income

Power Generation Connected to Grid, Comprising of Solar Panels and Wind Generation,
Separate Solar Water Heating Panels

You can express interest by ringing: 021 355 172

NEXT ISSUE: 15/11/2023

COPY IN: 12pm 10/11/2023

email: kurowbugle@gmail.com phone: 03 4360 950

or post it to: Kurow Museum & Info Centre, 57 Bledisloe St, PO Box 56, Kurow.



Dry Wood Still Available

Green wood specials now on Willow and Old Man Pine

PH 027 3388 513 A/H 03 4264 963



ONE SMART COFFEE

Available for events and gatherings

Phone Linda on 027 27 69857



THE GARAGE DOOR CENTRE

Distributors of

DOMINATOR

Garage Door Systems

New Sales & Service

In the Waitaki Valley

Call Brian 0274 335 299



Putting the spark in North Otago

0800 360 063

Switchboard Checks & Upgrades, Relocation, Faults

Caravan Warrants

On Call 24/7

Free Quotes

Heat Pump install & Servicing

Available Day or Night

Property Electrical Inspections

Surveillance Systems ♦ TV Faults ♦ Solar Installs ♦ Lighting

Hot Water Cylinder & Septic Tank Pumps – connections, disconnections, faults

Registered Electrician's ♦ Licenced Electrical Inspector's
♦ Licenced Security Consultant

What's our
future,
Canterbury?

 Environment
Canterbury
Regional Council
Kaitiaki Take Kōwhiri

Let's pick a path

Land use & biodiversity

Climate action

Water & coast

Our soils produce much of the food and natural products we consume and export, but how do we manage land use while also protecting and enhancing biodiversity?

Help us pick the right path at

ecan.govt.nz/ourfuture

Closes 3 December 2023.



Rural Lifestyle & Property Sales

KITTY CULP

Licensed under REA ACT

027 346 0846

kitty@oaoamaru.nz

ONE AGENCY
THE PROPERTY SPECIALISTS

Wanted by private collector /enthusiast -

Antique / vintage wooden or metal rocking horses and / or smaller wooden horses on wheels.

Very appreciative home assured where they will be well looked after.



Any condition is fine.

All welcome.

Please phone me anytime
on: **027 353 4887**



**OFFERING A WIDE RANGE
OF SURVEYING SERVICES**

Contact: Cameron Leckie

Phone: (03) 434 8020

Cell: 021 496 780

Office: 27a Coquet Street, Oamaru

Email: cameron@surveywaitaki.co.nz

Web: www.surveywaitaki.co.nz

- Subdivision & Boundary Adjustment
- Land Development
- Precision Farm Mapping
- Easements
- Resource Consent & Council compliance



**Oamaru
Engineering**

**Structural, Mechanical
& General Engineering**

**Machinery Repairs
General Fabrication
Mobile Workshop • Steel Sales**

Ph: (03) 434 2269 Mobile: 021 213 7152
www.oamaruengineering.co.nz

Kurow Community & Waitaki Valley School Library

Regular opening hours:

Tues, Thur, Fri 12.30 - 4pm
Wed 12.30 - 5pm
Saturdays 10.30am -12pm

Free Wifi and computers
Photocopying & Printing

Located at 1 Settlement Rd, between Waitaki Valley School & preschool
Ph 03 4360660

Facebook -Waitaki Valley School/Kurow Community Library



warm and comfy Kurow info center 12:30 till 3 Monday



Free art sessions for Adults in the Waitaki. Come and connect, have a laugh and try something new. See our facebook page for details and photos of what we do.

Contact Toni 021 1848470 or Nat 021 2037833

 **A20**
ELECTRICAL

Servicing all your electrical needs - big or small

Contact us today

Phone:
022 189 3250

Email:
rob@a2oelectrical.com

S&S PROPERTY CARE



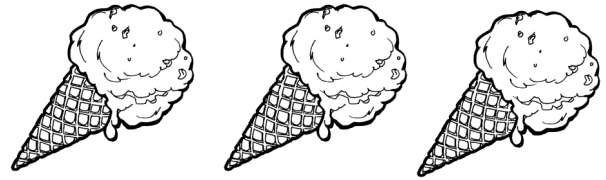
Interior & Exterior Painting

Looking to get your paint
refreshed?

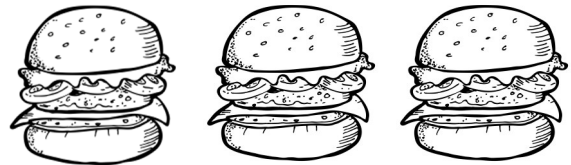
Wanting an efficient tidy
job?

Now is the right time to give
Steve a call on: **021 774 019**

RIVER CAFÉ



Delicious Burgers
Fish n Chips
Robert Harris Coffee
Home Baking
Ice creams/Drinks
Friendly Service



Phone orders welcome!
03 4360 820

 **Whitestone**
FUNERALS

Chapel
Catering Lounge
Westview Crematorium
Outdoor Garden Area
Pre-arrange
Pre-pay Options

54 Weston Road, Oamaru, NZ
Call 03 434 8812
whitestonefuneralsoamaru.co.nz

With You On The Journey



Deer, Sheep & Cattle fencing

Timber Yards, Post n Rails
Free Quotes
Fast and Clean Habits

Paul Dobias

027 229 4522
j.dobias1@outlook.com

WAITAKI GLASS AND GLAZING

"Craftsmen in Glass"

Up the Valley once a week—We won't be beaten on quality or price

*"Experts for replacement double glazing with over 45 years experience,
10 years unconditional guarantee on labour and materials"*

CALL TODAY—FREE QUOTE

Phone **03 434 1440**

or

027 434 1010

waitakiglass@gmail.com

DeGeest Yard, 3 Main North Road, Oamaru

Check out

www.kurow.org.nz

For events, and to reacquaint yourself with the Valley
or to read the Bugle Online

Domett Farms Contracting

Offering Cultivation & Harvesting work including:

- 4.5m Allen Direct Drill
- Super Grubbing
- Land Levelling
- Discing
- Mulching
- Loader Wagon
- Hay Baling



Contact Slim on:

0274 50 60 17



FELIZ & SAGE
and artspace

*Coffee, Great food, Art,
Gifts for everyone, NZ Post
& much more!*

New artist displayed every month!

Open 7 Days

www.feliz.co.nz

Afterpay/Laybuy/Zip Available

18 Bledisloe Street, Kurow
(Opposite the Four Square)
03 436 0575



FW Firewatch
South Canterbury Ltd
Fire Protection Service & Sales

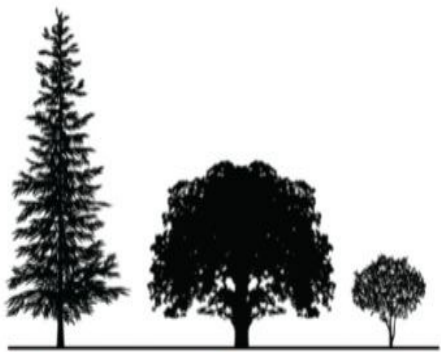
FIRE EXTINGUISHER SERVICES

- 🔥 Fire Equipment Sales & Service
- 🔥 Fire Suppression Systems
- 🔥 Fire Extinguisher Training
 - 🔥 Marine • Industrial
- 🔥 Commercial • Domestic 🔥 Rural
- 🔥 Insurance Approved Supplier

Locally Owned & Operated - IQP Registered
FPA Member

021 347 819

Firewatch South Canterbury Ltd
www.firewatch.co.nz



treekraft

est. 2022

QUALIFIED ARBORIST IN WAITAKI

- TREE REMOVALS
- TREE PRUNING
- TREE ASSESSMENTS
- DEAD WOODING
- HEDGING

call or email brodie for a free quote

treekraft@hotmail.com

0278456585

Kurow Medical Centre

8 Wynyard St, Kurow
P: 03 4360760 F: 03 4360780

E: info@kurowmedicalcentre.org.nz

W: www.kurowmedicalcentre.org.nz

www.facebook.com/kurowmedicalcentre

**Providing 24/7 health care and support to
the people of the Upper Waitaki and Mackenzie**

Kurow Medical Centre and its satellite clinic In Twizel Mackenzie Health Centre and Outreach Clinic at Omarama Community Hall

are proud to offer our registered and casual patients the following services:

- * Ultrasound performed by a qualified clinician (great for minor fractures, gallstones, kidney stones, heart & lung problems, foreign bodies, blood clots, detecting early pregnancy and much more) * Minor surgery * Vasectomies
- * Mole checks & removal * Steroid injections * Venesection
- * Aviation, workplace & driving medicals * Botox for wrinkle reduction
- * Workplace health screening * Counselling
- * Spirometry to diagnose asthma & COPD
- * Hearing & sight tests for adults & children * Ear syringing
- * Liquid nitrogen for warts, verruca's, & skin lesions
- * Cardiovascular risk assessment and diabetic checks (funded for eligible patients) * Travel advise and vaccination
- * Cervical smears (funded for eligible patients)
- * Seasonal flu shots and shingles vaccine (funded for eligible patients)
- * Childhood Immunisation * Before school checks
- * Postnatal and six-week baby health check

And much more!

GP consult fees: Under 14yrs free, Adult \$45.00
Care Plus - Free to eligible patients only

We also offer the following services from External Health Care Providers:

Counselling , Ear Health (Kurow only), Health Coach (free service provided by Wellsouth)
Health Improvement Practitioner – HIP a free service provided by Wellsouth in Kurow, Audiometry

Open: Omarama: Thursday 8.30am to 1pm

Kurow: Monday to Thursday 8.30am to 5pm & Friday 8.30am to 1pm

Twizel: Monday to Friday 8.30am to 5pm & Saturday 9am to 12pm

Please note: We provide 24/7 on call after hours cover by our doctors and PRIME nurses for all our registered & casual patients!

**If you require further information or an appointment, please contact us on:
For Kurow 03 4360 760 or for Twizel 03 976 0503 - Dr Tim & Juliet Gardner.**

Look us up on our website or Facebook page for more information

PGG Wrightson

**\$30
grocery
voucher**

**WITH EVERY \$600 SPENT
ON QUALIFYING ANIMAL
HEALTH PRODUCTS***



*Valid until 31 December 2023. Limited vouchers available.
See Terms and Conditions at store.pggwrightson.co.nz/sheep-animal-health-products

**Visit the team at PGG Wrightson Kurow and
check out our November Stock 'n' Save deals!**

**CCC
Harlequin Shorts**

2 FOR \$59⁹⁹



Valid 1/11/2023 – 31/12/2023 or while stocks last. Offer applies to all colours.

PGG Wrightson Kurow | 36 Bledisloe Street, Kurow | Phone 03 436 0534

Phone 03 436 0534

Helping grow the country

**End to end services
from start-up to wind-up:**

Bookkeeping & Payroll

Tax & Compliance

Financial Statements

Business Advisory



BACK²BLACK

Accounting & Business Solutions

Contact me for
a quote today:

Tracey Cranston

Chartered Accountant CPP

back2black.co.nz

027 240 0073

Check out
www.kurow.org.nz



Ear Health Waitaki is coming to the Kurow Medical Centre on Monday, November 6th.

Providing best practice wax removal for healthy ears.

Please ring on: 03 434 7228 to make an appointment

FERDINAND MARTIN LTD.

**Drilling | Oversowing | Regrassing
Quality prompt service**



CALL FERD 027 352 0466

Order your *Brassica's* now

North Otago Pastoral Services are once again supporting the local community, and you can too! This season we will be donating \$2 per hectare of Brassica and 5 cents per litre of Glyphosate to St John and Otago/Southland Heli Rescue.



**Get in early! Monthly prize
draws of \$1000 vouchers**

September: Hunting & Fishing
October: Noel Leeming
November: Mitre 10
December: New World

Order in September to be eligible for all 4 draws
Offer runs from 1st September to 15th December



PGG Wrightson Seeds

BARENBRUG

www.nops.co.nz | 03 434 7766

HERITAGE North Otago

Charitable Trust Incorporated SCHOLARSHIP/GRANT

Direct descendants of service personnel from North Otago who served in New Zealand or Commonwealth forces during the **Second World War or in combat since**, may apply to be considered for a scholarship/grant for health, education or special needs. The applicant must have resided in North Otago for the majority of their life time.

Application forms are available from the Secretary, June Jones, 61 Wharfe Street, Oamaru. Phone 027 260 7133 or email: junejonesnz@gmail.com

APPLICATIONS CLOSE with the Secretary by **5pm FRIDAY, 17TH NOVEMBER 2023.**

**J.E. Jones
HON. SECRETARY**

Do you suffer from...

- Foot pain
- Heel / arch pain
- Orthotics
- Plantar Fasciitis
- Ingrown toenails
- Neuroma
- Verrucae
- Corns
- Achilles Tendonitis
- Foot / ankle injuries
- Stiff big toe
- Bunions



THE
FOOT
PLACE

PODIATRIST
FOOT SPECIALIST

We can help.

Stefan, our Podiatrist and Podiatric Radiographer has over 30 years of podiatric clinical experience.

If you have any questions, or would like an appointment, please contact us:

 thefootplace.co.nz

 03 434 9900

 99 Thames Street,
Oamaru

 info@thefootplace.co.nz



Whalan Lodge Rest Home currently has two vacancies for new residents

If you are thinking about long-term or respite (short-term) aged care for yourself or a loved one then give us a call.

Please phone Susan Scott, Facility Manager, on **027 434 7519** for more details or talk to your GP or Practice Nurse.

HSC Upcoming Events

With the calendar beginning to fill up, we would like to share the dates for the upcoming HSC events for you to mark in the diary.

Thursday 16th November, 5.30pm
- Introductory Te Reo Maori Class (Session 1)

Come along to learn Te Reo Maori greetings, pronunciation, tikanga (customs), and waiata (songs). These sessions are free of charge, everyone welcome.

Thursday 23rd November, 2.00pm
- HSC Christmas Working Bee and BBQ at the Waitaki Valley Community Native Nursery

We welcome you to join us at the Community Native Nursery, bring along your work boots to help with a good old tidy up if you can, and also see how the nursery has grown, and learn about the exciting plans for the nursery and future HSC projects. There will be entertainment for the kids and a BBQ and refreshments to follow.

Tuesday 28th November
- Waitaki Valley School Planting Day

The Waitaki Valley School and Community Native Nursery team have a fun day of activities at the nursery and beginning planting the display garden.

Wednesday 29th November – Catchment Waterways and Mapping Workshop
(Time/Venue TBC)

For Hakataramea Valley Landowners and managers, more information to follow

Thursday 7th December, 5.30pm - Introductory Te Reo Maori Class (Session 2)

Thursday 14th December, 5.30pm - Introductory Te Reo Maori Class (Session 3)

For further information on any of the above events or to register please contact Leigh at info@hakatarameasc.co.nz or 021 048 6268.

 @hakatarameasustainabilitycollective
email. info@hakatarameasc.co.nz

www.hakatarameasustainabilitycollective.co.nz



HAKATARAMEA SUSTAINABILITY COLLECTIVE

MEMORIES FROM A LOCAL ABOUT KUROW RESERVES...

KUROW like many small places in its early days, had areas of land designated as Reserves and administered by Domain Boards. These now have been absorbed into the Waitaki District Council (Ahuriri Board) in this area.

This snippet is about the area known as the Railway Reserve which runs from Ferguson Street to Ranfurly Street. This came into the town's hands during the 1980's. The railway Branch line from Oamaru to Kurow closed in 1982. For many years Kurow was the railhead for the building of Benmore and Aviemore Dams, Twizel and the associated infrastructure. The land was then surplus to the Railways requirements and they just walked away. The then Community Council a few years later obtained the land for a park for future generations of Kurow, to be held as a Reserve. There were many a working bee with people from the whole district helping. The land was cleared, planted a few hundred trees, trickle irrigation installed, wind break sewn.

For the first few years the town looked after the Reserve but with government changes lost control and the area wasn't seen as important. In the last couple of years that cared for look is back. In the mid 1990's another group took up the challenge and with a few more working bees added the Stone Walls at each end.

Other enhancements have been the children's playground being upgraded with a BMX track, toilets and parking area, this area is known as Hydro Place. The name Railway Reserve comes from a naming competition. It was felt that the Railway should have some recognition having served this community for the previous 100 years, but that is the only connection to the Railway.

There are 3 other named areas for earlier residents who were passionate about trees. The area on S.H.1/Fergusson Street named after Ross Maxwell, first Conservator of the Waitaki Catchment Commission; at the west end of town- Mavis Shaw Place. Mavis, a local resident, planted trees and nurtured them for many, many years and Mabel Neave Grove an area of land bordering Fitzroy and Gordon Street.

Duntroon and District Development Association

AGM

**Duntroon Hall
9th November 2023**

7.00 pm

Supper to follow

A New Crowd in the Duntroon Hotel!

In the past weeks -whilst finding our feet and being overwhelmed with it all...- we have met quite a few locals, and it is heartwarming how we have been embraced in your community, but an introduction is in place for the people we haven't met, so far.

Kim and I (David) were traveling last year with the "Original Gypsy Fair" with our market stall selling Dutch Mini Pancakes (Poffertjes), Dutch Apple Donuts (Oliebollen) and Churro's. It was an amazing opportunity to explore the country.

When we were in Oamaru with the fair (at the beginning of this year) we both were attracted by this region and decided that we could settle down in this area, after about 15 years having lived in Sunny Nelson, raising children, doing life and having a very successful mobile café at the Nelson Market for over 10 years.

Whilst on holiday this winter, we were approached by Shirley (Ken's wife and longtime friend of Kim) if we were interested in managing this hotel in Duntroon. We didn't have real plans of what to do with our life when we came back from holiday, other than moving down to the "Oamaru area" and finding a new challenge, so there we are!

The first challenge was finding a new chef; we knew Micky & Sherryl from "our Gypsy life", living in Duntroon and knew how experienced Micky was as a chef and hopefully keen on working with us....and he was! After a good clean out of the kitchen, Micky came up with a great menu and we were ready to roll!

Pat was convinced to continue her delicious Thai menu on a Monday and Tuesday night, much to our relief.

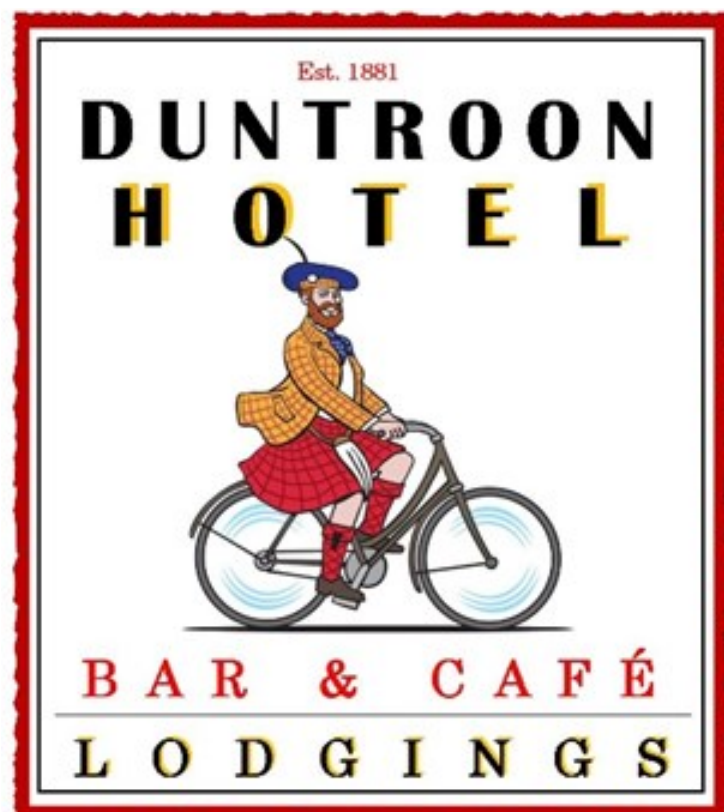
Now it is time to spruce up the place a little and create a nice place for everyone, so we came up with ideas like

"a \$20.- or less" for a decent meal -with the choice out of 2- on Wednesday's,

A Happy Hour on Friday's between 17:00 & 19:00 hour with \$10.- bottles and \$ 8, - house wines and we will come with more initiatives...

For now, we are looking for some "new blood" who can help us out behind the bar and kitchen for the busier times to come....

We are looking forward to welcoming you to the Duntroon Hotel!



Waitaki Valley Weekly

27/10/2023



Athletic Rotations

For the past three weeks at Waitaki Valley, all the classes have been participating in Athletics rotations. All teachers throughout the classes have chosen a sport and helped students train. High jump was at the gym, discus, shot put, and long jump was at the field. Running was at the tennis court. Unfortunately, due to unpredictable weather, the athletics day in Twizel was cancelled.



Learning Around the School

"I really enjoy free writing where I can write about feelings."

"I love learning about disasters and writing poetry."

"I like learning about the patterns and rules in algebra."

"Algebra gets me thinking symbols and their value."

"I am enjoying descriptive writing and expressing different emotions."

Book Fair

Recently, the book fair was open in the school foyer before and after school. The theme for this book fair was **'Hats off to Books,'** and mainly oriented towards Alice in Wonderland. The book fair encourages pupils to read and enjoy books more. In addition to books being sold, there was also a large range of stationery to purchase. We would like to thank those who prepared the event, you did a wonderful job! The school is very grateful to receive a percentage the profits made, that will go towards new books for the library and around the school, that students can enjoy in the future.



Reported by Lulu Heyes, Mikayla Manu & Arabella Green

Waitaki Valley Health Trust

Chairman's report 2023

A COMMUNITY HEALTH HUB FOR THE WAITAKI

Prior to the arrival of the Gardner Health practice from Twizel in 2016, the Waitaki Valley Medical Trust had been formed, in a vacuum, as practice managers and staff employers, following the retirement of Dr John Chambers in 2004. This is a role we do not wish to fulfil again - the 12 year inter-regnum was a unstable period. While there were periods of GP stability, short term locums came and went as the significant demand for after-hours health care was heroically held together by prime nurses. Since the Gardner's arrival the Trust has acted merely as landlords for the current medical centre buildings occupying the old Catchment Commission buildings on Wynyard St, Kurow.

In 2016 the need for a helipad for emergency medical evacuations was identified and a site next to the medical practice was proposed. However, over the past 3 years, a much greater need became apparent and a Community Health Hub is the proposed solution. This comprehensive facility would be for the whole of the Ahuriri Ward and Hakatamea Valley, for the purpose of health and wellness provision by all providers.

To date a plan has been developed and the Trust has undertaken due diligence with considerable input from health experts, town planners and a property consultant and architect. We examined in depth 4 possible sites in central Kurow that would meet the criteria for such a significant community asset. The brief was for a facility that would provide for the needs of medical, allied health and a variety of wellness practitioners, under one roof. Notably, there are 4 requirements, (i) a facility that meets the health care needs of this remote district for the next 70 years; (ii) one that would provide emergency care in the case of natural disaster and civil emergency; (iii) a space large enough to evolve with the changing needs of the times; (iv) easy, central access from 2 separate roads. The key words: comprehensive, inclusive, holistic, connectedness.

The site that stood out as by far the most appropriate, meeting the criteria identified is a small part of the old Railway reserve on the corner of Wynyard and Gordon Streets, opposite the Memorial Hall and the existing Medical Centre site. Preliminary plans for a 750sqm building have been drawn up and will be displayed for the community very soon. The Property Dept of the Waitaki District Council were not keen to be involved in the complex process of changing the status of Reserve land that the Council does in fact own, under the Reserves Act. The Trust therefore embarked on a community consultation process, presenting our plans to the communities of Omarama, Otematata, Kurow and Duntroon in well-advertised meetings. Additionally, we presented the proposal to the Ahuriri Community Board, the Waitaki Valley Community Society and an extensive collection of health and wellness providers across the region.

The depth of enthusiasm for this project, and for the site attests to the urgency of the need and appropriateness of our plans. There was 100% affirmation from these groups with the frequent comment of 'This is a no-brainer!' Helicopters Otago's Graeme Gale has affirmed that the chosen site is preferable to allow 24/7 all-weather access for emergency evacuation by air, for the few emergency medical evacuations required each year. Te Whatu Ora has endorsed the need, plan and site, as has Justin Tipa, Chairman of the Moeraki Rununga.

Three weeks ago, following the presentation of a Resolution by the Trust, the Waitaki District Council voted overwhelmingly to support the change of reserve status of the site chosen. There will be a series of public consultation processes to meet central and local government requirements for this change plus subdivision and Land Use Resource Consents. We are aware of two local objections which is to be expected in a democracy. However, we do trust the overwhelming community need will carry these plans forward.

The site chosen and the plans to date, will ensure an attractive, architecturally designed building with tasteful landscaping that will not detract. Indeed, a new building of this stature will significantly add to the Kurow environs. It is only a small part of the overall remaining Railway Reserve. There will be more than adequate remaining reserve retained, and there will be easy walking access around the building, improved parking for the Memorial Hall, and immediate access to an incorporated helipad on the infrequent occasions this is required. In addition, we propose the site currently occupied by the medical Centre is cleared and landscaped and returned for reserve use.

The Waitaki Community Health Hub is an exciting project and we believe fills a major gap in some much needed, critical infrastructure for the Valley. The Trust still has much work to complete bureaucratic and compliance requirements as we prepare for a significant fund-raise for a major asset for the district. We look forward to your support.

Finally, the Health Trust Board has just commissioned a legal update of the Trust's Constitution. This brings the existing Trust Deed into line with the Trusts Act 2017 and allows for an increase in the number of Trustees from 6 to 8. Also the name was changed to reflect its wider health and wellness mission.

The Waitaki Valley Health Trust looks forward to a very busy year ahead.

Jim Jerram, Chair Waitaki Valley Health Trust Oct 2023

St Stephen's Presbyterian Church Special Services

Annual Remembrance Service

Thursday 16th November @ 7pm

All Welcome

Waitaki Valley Singers

Will be presenting their "Christmas Selection", Starting 10am on Sunday 26th November @ St Stephen's Church

This will be followed by Morning Tea

Please Join Us – All Welcome



Waitaki Valley School Community Swimming Pool



The School Pool officially opens to School families and the Community on Wednesday 1st November.

Pool keys can be purchased and issued from the School Office from Wednesday 1st November to Thursday 14th December.

The cost of the key is \$150 for the season, which includes a \$50 refundable bond upon key return.

Keys need to be paid on day of collection.

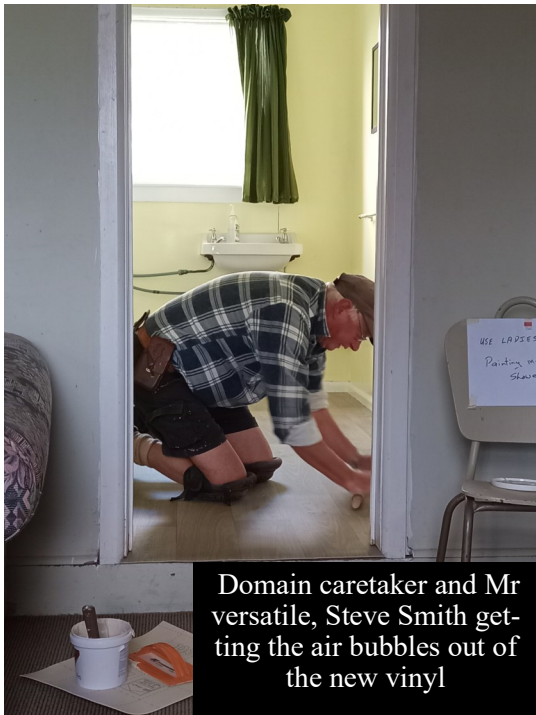
Duntroon Digest November 2023

The DDDA has been busy these last few months with the upgrade program for the Duntroon Domain and Camping ground.

New electrical work has been installed in the building and both the men's and ladies' showers have had a major makeover.

Of course, undertaking repairs always throws up "surprises" and so it was at the domain. The floor in the men's shower was to be replaced and it became apparent that new foundations were required.

On the plus side, the caretaker Steve Smith was able to turn his hands to many of the other jobs which means that the showers were sanded and painted, and new vinyl laid in time for the new camping season.



Domain caretaker and Mr versatile, Steve Smith getting the air bubbles out of the new vinyl

The new season is also a great time for the new managers of the Duntroon Hotel to take over. David Rijnink and Kim Westerink have hit the ground running. The cyclists have started arriving and the locals are dining in on the new menu. The place is alive with a sense of expectation.



Left to right: Kim Westernink, David Rijnink and chef Mickey Bowler.

Pat Martin is back for Monday and Tuesday night's Thai meals, to the delight of many and Mickey Bowler brings years of experience to the kitchen for the remainder of the week. Wednesday night will be a \$20 (or less) meal night. Mickey will choose two meals for that special on Wednesday, and regular meals will be available as well.

Kim has plans for the exterior of the Hotel, so watch this space.

Congratulations to our local woman Myfanwy Alexander, the Rural Life Year of the Farmer 2023 Winner. Myfanwy is a contract milker and president of North Otago Federated Farmers, the regional head for the Dairy Woman's Network and a member of the South Island Dairy Event governance group. All this and she is the mother of two daughters as well!



2024 ENROLLMENT NOW OPEN

Contact us:
M: 021 187 0452
P: (03) 436 0999
manager@wvp.kiwi

FOR SALE

H.P. Office Pro Printer 8710 –
with the following features–
Print, Fax,
Scan, Copy and Web

Includes 5 Ink Cartridges. Ex-
cellent order. Owners now
living overseas.

Offers.

Ring 4360659 or
0273587856

Otekaieke Hall AGM

Tuesday 7th November 2023

7.30 pm

Otekaieke Hall
Special School Road

New and current community members
are very welcome

Followed by a general meeting to dis-
cuss Xmas party and General busi-
ness.

Enquires to
Andrew Black 021 748 125
Or
Ping Horn 021 1762 812



rockgasTM
Waitaki

One stop shop for Gas. Locals Supplying Locals
45kg gas bottles regularly delivered

Otematata-weekly

Omarama - weekly

Twizel and Tekapo -2x weekly

Kurow – fortnightly

Oamaru- daily Mon-Fri

And all areas in between.



Down load the App

Ph 0800 433 4574

Order online - Rockgas.co.nz or www.hiflo.co.nz

Need Gas installed check out www.hiflo.co.nz or phone 03 433 0011 or info@hiflo.co.nz we have an experienced team in Oamaru and Twizel.



Waitaki Spraying Ltd

We now have a urea mixing plant on site
Liquid Urea is available



Chris Horn

P: 021 2702809

E: mail@waitakispraying.co.nz

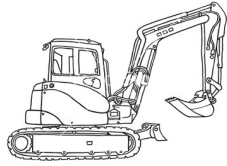
TWIN FISH

*Love your bungalow
Love your farmhouse
Love your villa
Love your modern build*

Owen King, Joiner
SH83 Otekaieke, Waitaki Valley

022 243 6470

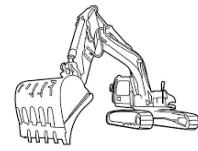
officetwinfish@icloud.com



DIG IT MACHINE HIRE

0800 716 052

Excavator Dry Hire



We have several sizes of excavator available up to 14 ton
Transporter and truck hire also available

Call for rates and availability



- ❖ Ag Lime
- ❖ Track Rock

Duntroon

Freecall: 0800 002 639

Superior Products @ Competitive prices

Mobile: 0274 383 595

*A division of BR Jones Contracting Ltd - Diggers, Bulldozers, Truck Hire and more.
Specialising in earthmoving, track work, effluent ponds, irrigation ponds and dairy conversions.*



**PLEASE CONTACT BEN FERGUSON FOR
TEST RESULTS, PRICING
AND LIME ORDERS
\$25 PER TONNE**

**0274 742 899
WINTERBURGLIME@GMAIL.COM**

LIME IS NOW SHED STORED

Registered Electrician

- For all things electrical
- Large or small
- Domestic and commercial
- Prompt service
- Reasonable rates
- Free quotes

Try the friendly team at **ELECTRO SPEC 2007 LTD**

Phone Mark 027 264 0404



PUNA KERR SHEARING



For all your shearing
crutching and tailing requirements
Phone Puna and Justine on
03 4360 988 or 027 408 7482
LOOKING AFTER THE LOCALS



**QUALITY WORK
GUARANTEED**

**FOR ALL YOUR EARTHMOVING NEEDS
MACHINES AND
COMPACTORS FOR HIRE
CALL GARY ON: 0274 373 668
OR (03) 4360 778
WEB: www.garyhawkins.co.nz**



**SOUTHERN LAND
CKL
03 443 5577**

Email vergne@southernland.co.nz

**Vergne Wilson
RPSurv, B.Surv, NZCE (Civil)
Registered Professional Surveyor**

Weekly in Kurow and surrounding districts.
Please phone to discuss your project

**Subdivisions * Boundary Relocations * GPS Surveys
Farm/ Property Mapping * Contouring * Vineyard Set out
* Land Development Engineering * Resource Consents**

AHURIRI LINK

NEWS FROM COUNCIL & THE COMMUNITY BOARD

COMMUNITY CONVERSATIONS

Council staff, Councillors and Community Board members have been travelling around the district, facilitating community conversations, listening to what you love about your towns, what you wouldn't want to lose, and your visions for the future.

We held sessions in October for the Kurow, Duntroon, Otematata, Ōmārama and Ōhau communities which over 80 people attended, with great feedback from the folks who came along.

Thank you to everyone who gave up time in their evening, long weekend and post All Blacks semi-final game morning to spend with us!

We really appreciate the candour and honesty brought to the table as we talked about the challenges facing our townships, as well as the creative ideas for ways we could work together to address them.

We're now writing up engagement summaries for each of the sessions which will be sent out to everyone involved for further feedback and presented to elected members as part of our Long Term Plan preparation.

It's all helping to build a picture of what gives each of our townships their unique character, as well as finding common themes that are important to all.



If you missed your local Community Conversation, our community and business surveys are still open:
www.letstalk.waitaki.govt.nz



www.waitaki.govt.nz



Waitaki

DISTRICT COUNCIL
TE KAUNIHERA Ā ROHE O WAITAKI