

BUGLE

Published by
Kurow Information Centre
as a service to our community



Issue 568
Wednesday
23 August 2023



WAITAKI VALLEY COMMUNITY CAR



PHONE
4360 950
Mon-Fri

Everybody who is using the cars are really appreciating what a wonderful job Sharon from S&S Property is doing at keeping them so sparkling clean! Thank you!!!



We welcome the opportunity to offer you a review on your business, personal or farm insurances.

Talk to the team at your local Aon Oamaru branch on

03 434 0080

10 Coquet Street, Oamaru

TO BOOK A COMMUNITY CAR: Phone 027 282 0615 or 4360 950

BUGLE PUBLICATION:

The Bugle is at the Kurow Information Centre - Please send your pieces to kurowbugle@gmail.com and please ensure they are in by strictly 12pm on the Friday before publication or they won't be in until the following issue.

ST JOHN MORNING TEA:

Held on the second Tuesday of every month @ 10am in the St John rooms on Gordon Street. Please phone Trish if you need a ride: 027 472 2674

WEEKLY WELLNESS WALKS:

More info on page 6.

WAITAKI INDEPENDENT IRRIGATORS AGM:

Tuesday September 5th. More info on page 9.

KUROW RESOURCE RECOVERY PARK WINTER HOURS:

Wednesday & Sunday 1pm-4pm.

<https://www.waitaki.govt.nz/Services/Rubbish-Recycling-Waste-Minimisation/rubbish-and-recycling-services>

NETSAFE:

Netsafe have launched an awesome new tool which helps you identify whether a link or website is legitimate or part of a scam.

Visit www.checknetsafe.nz, type in or paste the web address link you want to check and within seconds you will know whether is likely a scam or legitimate.

We think this is a great tool and encourage you to share it with your friends and family.

Check out

www.kurow.org.nz

For events, and to reacquaint yourself with the Valley
or to read the Bugle Online



YOGA: Yoga classes in Kurow for gentle stretching and relaxation. Starting soon. Tuesdays 4pm.
Details: contact Rosina 027 2280 677



QI GONG: Qi Gong workshop in Kurow. Saturday 9 Sept, 1 – 4pm.
Details: contact Rosina 027 2280 677

JUSTICE OF THE PEACE IN KUROW:

- Heather Gray 027 436 8348
- John Sturgeon 021 355 172
- John Currie 027 453 1165
- Contact can also be made via the Kurow Info Centre 03 4360 950

JPs are available by appointment only to:

- Witness signatures on documents
- Certify copies of documents
- Take oaths, declarations, affidavits or affirmations
- Confirm identity

The service is free of charge



BIN LITTER

Pick up litter and put it in the right bin.
Drains go straight to our rivers and sea,
help keep them clean.

Protect our waterways
ecan.govt.nz/stormwater



NEXT ISSUE: 06/09/2023

COPY IN: 12pm 01/09/2023

email: kurowbugle@gmail.com phone: **03 4360 950**

or post it to: Kurow Museum & Info Centre, 57 Bledisloe St, PO Box 56, Kurow.



Dry Wood Still Available

Green wood specials now on
Willow and Old Man Pine

PH 027 3388 513 A/H 03 4264 963



ONE SMART COFFEE

Available for events and gatherings

Phone Linda on 027 27 69857



THE GARAGE DOOR CENTRE

Distributors of

DOMINATOR

Garage Door Systems

New Sales & Service

In the Waitaki Valley

Call Brian **0274 335 299**



Putting the spark in North Otago

0800 360 063

Switchboard Checks & Upgrades, Relocation, Faults

Caravan Warrants

On Call 24/7

Free Quotes

Heat Pump install
& Servicing

Available Day or Night

Property Electrical
Inspections

Surveillance Systems ♦ TV Faults ♦ Solar Installs ♦ Lighting

Hot Water Cylinder & Septic Tank Pumps – connections,
disconnections, faults

Registered Electrician's ♦ Licenced Electrical Inspector's
♦ Licenced Security Consultant

Apply now for Meridian's Power Up Community Fund

We're proud to support and fund local projects in the communities around our wind farms and hydro stations with Power Up. Together we're working to build strong, sustainable communities. Power Up Waitaki provides grants for projects in Aoraki/ Mount Cook, Twizel, Omarama, Otematata, Kurow, Hakataramea, Duntroon, Ikawai, Papakaio, Glenavy.

How to apply

Applications for the next funding round are open until midnight on 24 September 2023.

For more information and to apply:

- visit meridian.co.nz/pu-waitaki
- email community.fund@meridianenergy.co.nz
- call 03 357 9732



Meridian.

FRESH IS BEST
NEW ZEALAND'S FINEST SEAFOOD

Hi Waitaki Valley and District.

We will be selling our Seafood at the usual Mobile Traders sites in Kurow on the following Dates: **Thursday 7th & 28th of September**

We hope to have what you are looking for and look forward to seeing you all then!

027-4399253 / maguroken@mac.com

 **Environment
Canterbury
Regional Council**
Kaunihera Taiao ki Waitaha

Drop-in Session Monday 4 September

WHAT'S OUR FUTURE, CANTERBURY?

ecan.govt.nz/ourfuture

Environment Canterbury is updating the Regional Policy Statement and targeted changes to the Land and Water Regional Plan to meet the expectations of the Government, mana whenua and our communities.

To ensure your views are reflected in those plans, we are asking for your visions for freshwater and the outcomes we should be working towards together to better manage the impact of human activity on the environment across the region, including how we should adapt and respond to climate change.

Come and talk to us at the Kurow Hotel from 3-7pm, Monday 4 September. Hope to see you there!



WEEKLY WELLNESS WALKS

Kurow

Starting 10am Tuesday 29th August 2023

- ⇒ **Beginners Walking Group**
- ⇒ **6 Week Programme**
- ⇒ **Up To 1 Hour - Depending On Ability**
- ⇒ **Held on Tuesdays and Thursdays - Come To One Or Both!**
- ⇒ **An Easy Track To Start You On Your Walking Journey**
- ⇒ **Get Amongst Nature, Meet New People!**
- ⇒ **Register Your Interest At Kurow Medical Centre 03 436 0760**



Free of Charge



Check out

www.kurow.org.nz

For events, and to reacquaint yourself with the Valley
or to read the Bugle Online

S&S PROPERTY CARE



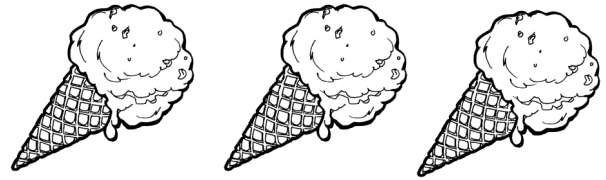
Interior & Exterior Painting

Looking to get your paint
refreshed?

Wanting an efficient tidy
job?

Now is the right time to give
Steve a call on: **021 774 019**

RIVER CAFÉ



Delicious Burgers
Fish n Chips
Robert Harris Coffee
Home Baking
Ice creams/Drinks
Friendly Service



Phone orders welcome!
03 4360 820

 **Whitestone**
FUNERALS

Chapel
Catering Lounge
Westview Crematorium
Outdoor Garden Area
Pre-arrange
Pre-pay Options

54 Weston Road, Oamaru, NZ
Call 03 434 8812
whitestonefuneralsoamaru.co.nz

With You On The Journey



Deer, Sheep & Cattle fencing

Timber Yards, Post n Rails
Free Quotes
Fast and Clean Habits

Paul Dobias

027 229 4522
j.dobias1@outlook.com

WAITAKI GLASS AND GLAZING

“Craftsmen in Glass”

Up the Valley once a week—We won't be beaten on quality or price

*“Experts for replacement double glazing with over 45 years experience,
10 years unconditional guarantee on labour and materials”*

CALL TODAY—FREE QUOTE

Phone **03 434 1440**

or

027 434 1010

waitakiglass@gmail.com

DeGeest Yard, 3 Main North Road, Oamaru

Waitaki Independent Irrigators Inc AGM

Tuesday 5th September, 4pm
Kurow Golf Club

Rsvp: admin@waitakiirrigators.co.nz
021 504 509



Rural Lifestyle & Property Sales

KITTY CULP

Licensed under REA ACT

027 346 0846

kitty@oaoamaru.nz

ONE AGENCY
THE PROPERTY SPECIALISTS



FELIZ & SAGE
and artspace

*Coffee, Great food, Art,
Gifts for everyone, NZ Post
& much more!*

New artist displayed every month!

Open 7 Days

www.feliz.co.nz

Afterpay/Laybuy/Zip Available

18 Bledisloe Street, Kurow
(Opposite the Four Square)
03 436 0575

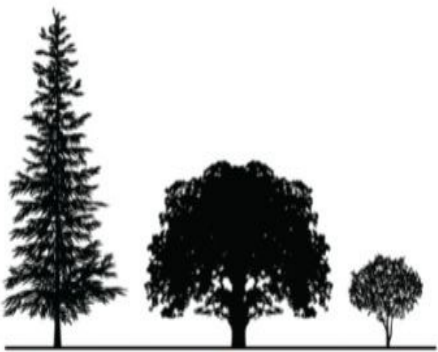


AVAILABLE AT THE
INFORMATION CENTRE

Monday - Friday

- Photocopying*
- Binding*
- Colour printing*
- Laminating*
- WIFI for free*
- Community Car bookings*
- NZTA services*

PHONE 4360 950



treekraft

est. 2022

QUALIFIED ARBORIST IN WAITAKI

- TREE REMOVALS
- TREE PRUNING
- TREE ASSESSMENTS
- DEAD WOODING
- HEDGING

call or email brodie for a free quote

treekraft@hotmail.com

0278456585

Kurow Medical Centre

8 Wynyard St, Kurow
P: 03 4360760 F: 03 4360780

E: info@kurowmedicalcentre.org.nz

W: www.kurowmedicalcentre.org.nz

www.facebook.com/kurowmedicalcentre

**Providing 24/7 health care and support to
the people of the Upper Waitaki and Mackenzie**

Kurow Medical Centre and its satellite clinic In Twizel Mackenzie Health Centre and Outreach Clinic at Omarama Community Hall

are proud to offer our registered and casual patients the following services:

- * Ultrasound performed by a qualified clinician (great for minor fractures, gallstones, kidney stones, heart & lung problems, foreign bodies, blood clots, detecting early pregnancy and much more) * Minor surgery * Vasectomies
- * Mole checks & removal * Steroid injections * Venesection
- * Aviation, workplace & driving medicals * Botox for wrinkle reduction
- * Workplace health screening * Counselling
- * Spirometry to diagnose asthma & COPD
- * Hearing & sight tests for adults & children * Ear syringing
- * Liquid nitrogen for warts, verruca's, & skin lesions
- * Cardiovascular risk assessment and diabetic checks (funded for eligible patients) * Travel advise and vaccination
- * Cervical smears (funded for eligible patients)
- * Seasonal flu shots and shingles vaccine (funded for eligible patients)
- * Childhood Immunisation * Before school checks
- * Postnatal and six-week baby health check

And much more!

GP consult fees: Under 14yrs free, Adult \$43.00
Care Plus - Free to eligible patients only

We also offer the following services from External Health Care Providers:

Counselling , Ear Health (Kurow only), Health Coach (free service provided by Wellsouth)
Health Improvement Practitioner – HIP a free service provided by Wellsouth in Kurow, Audiometry

Open: Omarama: Thursday 8.30am to 1pm

Kurow: Monday to Thursday 8.30am to 5pm & Friday 8.30am to 1pm

Twizel: Monday to Friday 8.30am to 5pm & Saturday 9am to 12pm

Please note: We provide 24/7 on call after hours cover by our doctors and PRIME nurses for all our registered & casual patients!

**If you require further information or an appointment, please contact us on:
For Kurow 03 4360 760 or for Twizel 03 976 0503 - Dr Tim & Juliet Gardner.**

Look us up on our website or Facebook page for more information

Domett Farms Contracting

Offering Cultivation & Harvesting work including:

- 4.5m Allen Direct Drill
- Super Grubbing
- Land Levelling
- Discing
- Mulching
- Loader Wagon
- Hay Baling



Contact Slim on:
0274 50 60 17



For rent - 3 bedroom house in Kurow Duntroon area, Otekaieke . Our house is potentially available for 6-12 months for \$275 per week depending on individual requirements.



Please ring Andrew Black on: 021 748 125

Reporting issues is a snap with our Snap Send Solve App

Did you know Waitaki District Council has a FREE smart phone app to help make reporting issues easy? If you spot a pothole on a local road, damage to a footpath, a water leak or any other issue that you think Council may be able to sort, then you can use this clever app to report it by taking a photo (SNAP) and sending (SEND) it to the Council (SOLVE).

The app works by identifying the location of where the photo is taken using your phone's GPS data. You can fill in a few details then hit send. A report is then allocated to the relevant Council department. *Find more info and a link to the app on our website.*



Waitaki
DISTRICT COUNCIL
TE KŪWHĒRA A ROHE O WAITAKI

www.waitaki.govt.nz

*Scan for more info
and app download*





FOR SALE

Synargy lounge suite

Two & a half years old,
power recline, phone charger access,
grey fabric, \$2,400

Phone: 021 1227 382



Survey Waitaki
surveying • planning • engineering

Contact: Cameron Leckie

Phone: (03) 434 8020

Cell: 021 496 780

Office: 27a Coquet Street, Oamaru

Email: cameron@surveywaitaki.co.nz

Web: www.surveywaitaki.co.nz

**OFFERING A WIDE RANGE
OF SURVEYING SERVICES**

- Subdivision & Boundary Adjustment
- Land Development
- Precision Farm Mapping
- Easements
- Resource Consent & Council compliance

FERDINAND MARTIN LTD.

Drilling | Oversowing | Regrassing
Quality prompt service



CALL FERD 027 352 0466

Kurow gets benched – In a good way!

The All Blacks have gifted the birthplace of legendary Captain Richie McCaw a beautiful new handcrafted bench, one of 26 given to selected community locations across New Zealand, ahead of the Rugby World Cup in France this year.



The carved macrocarpa bench has been installed this week next to the trail running through the Mavis Shaw Reserve in Kurow with the message “Me eke mai – our bench is your bench”, and is intended as a thank you to New Zealand for “having their backs and supporting them...and hopefully providing a safe place where kiwis can also go to have each other's backs”.

A statement from NZ Rugby says “On the rugby field, the bench is the backbone of the team, the players have the backs of the rest of the side. Off the field, a bench is a place for people to come together, to share and connect, to celebrate and commiserate.”

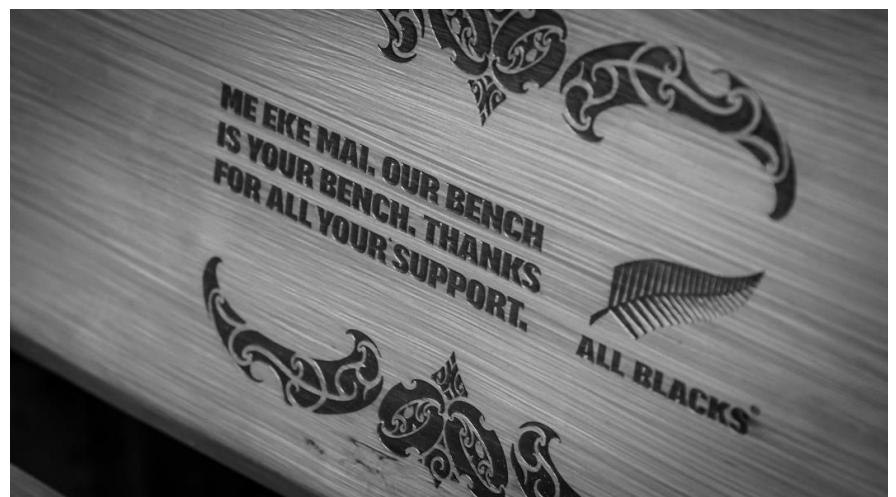
“This bench is built on a kaupapa of manaaki, on the belief that if we uphold the mana of others and make them bigger than ourselves that we too will benefit”.

The bench features an exclusive All Blacks Tohu as well as a message from the team. The Tohu for this project is part of NZ Rugby's whakapapa.

Ahuriri Community Board Chair Calum Reid says the bench “is a great addition to the village and the perfect spot to reflect a while and admire the beauty of Kurow. Hopefully this means the All Blacks will bring the Rugby World Cup to town for a tour when they win it in September”.

The Tohu engraved on the bench is part of NZ Rugby's whakapapa. It was designed by noted artist Tim Worrall (Ngāi Tūhoe) in 2011, to unite and inspire Aotearoa NZ to support the All Blacks.

The outer segments are Taniwhā (Teams), the inner the seed of potential (Te Kakanō) and they combine to form a rugby ball. When replicated they form a face (Moko) and a lattice work background (Kōwhaiwhai). The team (Taniwhā) appear as wings (Parirau). At the centre are two kākanō (seeds of potential) in the shape of eyes of a bird (Manu).



Those seated on the bench will have the All Blacks' team wings wrapped around them.

ECan seeking information on hay, nassella from community

New information has potentially shown how hay, distributed over several Duntroon properties in the 1970s – and contaminated with nassella tussock seed – may be a source of significant infestations discovered recently.

Environment Canterbury is interested to hear of tales from years-gone-by relating to the introduction of hay, other stock feed or machinery movements originating from North Canterbury, Marlborough or the North Island between then and now.

A substantial amount of hay arrived in the Duntroon area from North Canterbury in the late 1970's in response to drought conditions and feed shortages. One of the properties to have received some of that hay now has a significant nassella tussock control programme and ECan believes there may be others.

To raise awareness and help bring ideas and stories forward, a nassella tussock field day will be held at Glen Cary Station, 426 Hayes Road, Kurow on Friday 25 August from 1pm.

Environment Canterbury staff will demonstrate the results of an undetected nassella infestation. Topics will include identification, control methods, recommended on-farm biosecurity; hygiene practices, surveillance, and pathway management.

New finds of nassella tussock in South Canterbury are becoming a regular occurrence. In recent years, regional council staff, contractors and landowners have discovered new infestations, some of which are substantial, and this trend is becoming concerning.

There are currently approximately 45 sites and properties where nassella is known to occur in South Canterbury.

Senior biosecurity officer Noel Crump said the success of ECan's search and surveillance programme is dependent on a number of factors.

"Due to the vast amount of land, key factors have dictated our surveillance programme over time, including known infestations and possible pathways to and from these," he said.

"Information from the community will assist us to formulate a more targeted surveillance programme by giving us possible pathways to follow up on. We need to promote passive surveillance from all land occupiers and agricultural services personnel such as stock agents and agricultural contractors.

"We are urging the local community to report anything that looks unusual or out of place, such as large tussock with purple-pink flowers during the November-December period," Noel said.

Nassella tussock is an invasive grass. It displaces other grasses leaving pasture unpalatable to stock. If you think you have seen nassella tussock anywhere in the region, Environment Canterbury wants to hear about it. [Tell the regional council about your sighting here.](#)

If you are interested in attending the field day, please RSVP to Noel.Crump@ecan.govt.nz by midday, Thursday 24 August.



Hakataramea Sustainability Collective AGM

Join us for our Annual General Meeting to sign off on and celebrate the year that has been and appoint our 2023 -2024 Committee.

Following the AGM you will have the opportunity to listen to our guest speaker Jonathan Wallis from Minaret Station, Wanaka. Jonathan manages Minaret Station for his family which has owned it since 1995, where through a major development phase it has gone from 2000SU to 25,000SU running a mix of deer, sheep and cattle. Jonathan also chaired the High Country Accord which is a not-for-profit trust established in 2003 to promote and protect the rights of pastoral leaseholders and to ensure the long-term economic, environmental and social sustainability of South Island High Country.

Come and listen to Jonathan talk about how he navigates the challenges of ensuring viability, meeting regulations and getting enjoyment out of what he does.

Tea, coffee, cakes and a chat to end the evening.

If you would like to join the committee, please email info@hakatarameasc.co.nz for a nomination form. Nominations close Tuesday 22nd August at 5.00pm.

To vote at the AGM or join the committee you must be a member of HSC so please ensure you have completed a membership form, these can be requested by emailing info@hakatarameasc.co.nz.

HSC membership is currently free of charge.

Date:
Tuesday 29th August, 2023

Time:
6.30pm

Location:
Waitaki Rod and Gun Club,
Hayes Road,
Hakataramea Valley

RSVP:
By Friday 25th August to
info@hakatarameasc.co.nz

Nassella Tussock Workshop

Nassella tussock is a significant threat to the farms within the Hakataramea Valley and has recently been identified on several new sites in the catchment. Nassella can be tricky to spot and if missed can spread quickly. So, join the experts to scout a hillside to get your eye in for identifying this invasive grass, and learn more about effective methods of control.


Workshop held at Glen Cary Station starting at 1pm, finishing with a BBQ.

Date:
Friday 25th August, 2023

Time:
From 1pm with BBQ to finish

Location:
Glen Cary Station,
428 Hayes Road,
Hakataramea Valley

RSVP:
By Wednesday 23rd August
to info@hakatarameasc.co.nz

 [@hakatarameasustainabilitycollective](https://www.facebook.com/hakatarameasustainabilitycollective)
email. info@hakatarameasc.co.nz

www.hakatarameasustainabilitycollective.co.nz

 **HSC**
HAKATARAMEA SUSTAINABILITY COLLECTIVE

Become a member of the HSC

The Hakataramea Sustainability Collective (HSC) would like to welcome new members to join our catchment group.

What does the HSC do?

HSC's purpose is to be educational, to promote a healthy farming, rural and recreational environment for all who live and visit the Hakataramea Valley.

Since establishment in 2017, the HSC have run numerous farming focused workshops and field days, and instigated in a variety of projects, including the re-establishment of a picnic area on McHenry's Road, a river channel weed control program, the recycling depot on Hakataramea Valley Road, and the Community Native Nursery in Kurow.

Why become a formal member?

The HSC is required to have a formal register of members to meet obligations under the Charities Act. As a member, you have the ability to vote at our AGM and be nominated to join our committee should you wish. When the opportunity arises in the near future you will have the option to join projects open to members.

Who can be a member?


If you live in the Hakataramea Valley you are automatically eligible to be a member, you just need to complete and return a membership form. If you live outside the Hakataramea Valley you can apply to our committee to become a member. Each household holds one membership and is entitled to one vote.

How do I become a member?

Simply contact us using the email below. Related documents are also available on request, including HSC Constitution and rules, HSC Privacy Policy, HSC Welcome Pack.

Or come along to our AGM on Tuesday 29th August at 6.30 pm at the Waitaki Rod and Gun Club, Hayes Road, Hakataramea Valley. Membership forms will be available to fill out on the evening.

If you have any further questions, would like to request a membership form or RSVP for the AGM, please email info@hakatarameasc.co.nz or call Juliet Gray (HSC Chairperson) on 021 677 342.

 @hakatarameasustainabilitycollective
email. info@hakatarameasc.co.nz

www.hakatarameasustainabilitycollective.co.nz



HAKATARAMEA SUSTAINABILITY COLLECTIVE

♥ love your hearing

'Hear' For You, Kurow

We're your local hearing experts. Whether you need your first hearing test or you're ready for a new set of hearing aids, **Craig Daunheimer** is 'hear' for you. He'll listen to your story and see you at your appointment - **every time.**

Proactive Hearing Checks & Diagnostic Testing

Hearing Aid Fittings & Maintenance

Tinnitus Support & Advice

Custom Earplugs and Hearing Protection

**Hearing
Tests**

Ages 5 years
and older



Call (03) 434 0373

Kurow Medical Centre
craig@craigdaunheimerhearing.co.nz
craigdaunheimerhearing.co.nz

 **CRAIG DAUNHEIMER
hearing**
Proudly 100% Kiwi owned and operated



Specialising in rural real estate and lifestyle blocks

Barry and John are available and only too happy to assist you with all your real estate needs. All queries and friendly chats are treated in total confidentiality

Please get in touch at anytime, we are happy to help where we can

Barry Meikle Rural Sales Consultant
M 027 436 5131 E barry.meikle@pb.co.nz

John McCone Rural Sales Consultant
M 027 221 9133 E john.mccone@pb.co.nz



Property Brokers

Proud to be here

pb.co.nz

Property Brokers Licensed REAA 2008



Formally Walls Funeral Services

“Proudly locally owned.”

49 Humber St, Oamaru. Ph. 03 434 8266.

FERDINAND MARTIN LTD.

Drilling | Oversowing | Regrassing
Quality prompt service



CALL FERD 027 352 0466



FIRE EXTINGUISHER SERVICES

- 🔥 Fire Equipment Sales & Service
- 🔥 Fire Suppression Systems
- 🔥 Fire Extinguisher Training
- 🔥 Marine • Industrial
- 🔥 Commercial • Domestic 🔥 Rural
- 🔥 Insurance Approved Supplier

Locally Owned & Operated - IQP Registered
FPA Member

021 347 819

Firewatch South Canterbury Ltd
www.firewatch.co.nz

Carpet Cleaner Hire Now in Kurow



\$45.00 for 4 hours
\$55.00 for 8 hours
\$75.00 for 24 hours
\$20 for 1L of carpet shampoo

All hires have a \$20.00 bond

For any enquiries phone
Justine or Puna
03 4360 988 or 027 408 7482



rockgas™

Waitaki

One stop shop for Gas. Locals Supplying Locals
45kg gas bottles regularly delivered

Otematata-weekly

Omarama - weekly

Twizel and Tekapo -2x weekly

Kurow – fortnightly

Oamaru- daily Mon-Fri

And all areas in between.



Down load the App

Ph 0800 433 4574

Order online - Rockgas.co.nz or www.hiflo.co.nz

Need Gas installed check out www.hiflo.co.nz or phone 03 433 0011 or info@hiflo.co.nz we have an experienced team in Oamaru and Twizel.



Waitaki Spraying Ltd

We now have a urea mixing plant on site
Liquid Urea is available



Chris Horn

P: 021 2702809

E: mail@waitakispraying.co.nz

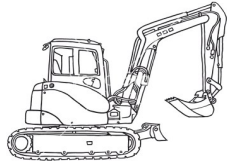
TWIN FISH

*Love your bungalow
Love your farmhouse
Love your villa
Love your modern build*

Owen King, Joiner
SH83 Otekaieke, Waitaki Valley

022 243 6470

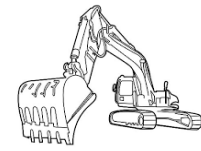
officetwinfish@icloud.com



DIG IT MACHINE HIRE

0800 716 052

Excavator Dry Hire



We have several sizes of excavator available up to 14 ton
Transporter and truck hire also available

Call for rates and availability



- ❖ Ag Lime
- ❖ Track Rock

Duntroon

Freecall: 0800 002 639

Superior Products @ Competitive prices

Mobile: 0274 383 595

*A division of BR Jones Contracting Ltd - Diggers, Bulldozers, Truck Hire and more.
Specialising in earthmoving, track work, effluent ponds, irrigation ponds and dairy conversions.*



**PLEASE CONTACT BEN FERGUSON FOR
TEST RESULTS, PRICING
AND LIME ORDERS
\$25 PER TONNE**

**0274 742 899
WINTERBURGLIME@GMAIL.COM**

LIME IS NOW SHED STORED

Registered Electrician

- For all things electrical
- Large or small
- Domestic and commercial
- Prompt service
- Reasonable rates
- Free quotes

Try the friendly team at **ELECTRO SPEC 2007 LTD**

Phone Mark 027 264 0404



PUNA KERR SHEARING



For all your shearing
crutching and tailing requirements
Phone Puna and Justine on
03 4360 988 or 027 408 7482
LOOKING AFTER THE LOCALS



**QUALITY WORK
GUARANTEED**

**FOR ALL YOUR EARTHMOVING NEEDS
MACHINES AND
COMPACTORS FOR HIRE
CALL GARY ON: 0274 373 668
OR (03) 4360 778
WEB: www.garyhawkins.co.nz**



**SOUTHERN LAND
CKL
03 443 5577**

Email vergne@southernland.co.nz

**Vergne Wilson
RPSurv, B.Surv, NZCE (Civil)
Registered Professional Surveyor**

Weekly in Kurow and surrounding districts.
Please phone to discuss your project

**Subdivisions * Boundary Relocations * GPS Surveys
Farm/ Property Mapping * Contouring * Vineyard Set out
* Land Development Engineering * Resource Consents**

NOTICEBOARD

23 AUGUST 2023



TENDER – LEASE OF LAND OLD SLIP ROAD, HAKATARAMEA TOWNSHIP

Waimate District Council invites tenders for the lease of 1.11 ha (more or less) of land being Reserve 2761, Part of Reserve 2760, Blocks XIII and XIV of the Hakataramea Survey District, situated at Old Slip Road, Hakataramea Township.

All property and tender information is available from the Waimate District Council Main Office during office hours or contact Council on 03 689 0000 or by email council@waimatedc.govt.nz.

Tenders to be in a sealed envelope and endorsed 'Old Slip Road – Tender for Land' at the Waimate District Council Main Office, 125 Queen Street, Waimate, or via email to tender@waimatedc.govt.nz, lodged no later than **4pm on Friday 25 August 2023**.

The highest or any tender will not necessarily be accepted.

Dan Mitchell
Asset Group Manager

CREATIVE NZ COMMUNITIES GRANT

Council invites applications for financial assistance from clubs, groups and organisations within the Waimate District for the Creative NZ Communities Grant.

If you have an idea for a project that might support community involvement in the arts, engage young people in the arts or create cultural diversity in the arts – be sure to apply and tell us more.

Application forms and information are available from the Waimate Event Centre and at waimatedc.govt.nz – all enquiries can be made to the Grants Administrator on 03 689 7771.

All applications must be received by **12pm on Friday 8 September 2023** and sent to Grants Administrator, PO Box 122, Waimate 7960, emailed to info@waimatedc.govt.nz, or delivered to the Waimate Event Centre, 15 Paul Street, Waimate.

To learn more,
visit waimatedc.govt.nz/community/grants

