

# BUGGLE

Published by  
Kurow Information Centre  
as a service to our community



Issue 481  
Wednesday  
11 March 2020

## Goodbye & Thank You

After 40 years in the Waitaki Valley, we have sold our home and are moving closer to family.

We want to thank Waitaki Valley School, Waitaki Valley Preschool, Volunteer Librarians and the Community for all your lovely gifts, cards and morning teas. We are overwhelmed with your generosity and best wishes.

We leave with very happy memories, and look forward to our new life and what it will offer.

A very sincere thankyou to you all.

*Jim & Bridget Sutherland*

## INDOOR BOWLS



Kurow Indoor Bowling Club is starting at the Memorial Hall on Thursday 26th March at 7.30pm

New members are most welcome

Enquiries to Helen Comer 436 0808



We welcome the opportunity to offer you a review on your business, personal or farm insurances.

Talk to the team at your local Aon Oamaru branch on

**03 434 0080**

**230 Thames Highway Oamaru**

**TO BOOK A COMMUNITY CAR:** Phone 027 282 0615 or 4360 950

### **WAITAKI VALLEY PHONE BOOKS:**

Get your address and phone/cell/email in the Waitaki Valley Phonebook: ring Carron or Seanne on 4360 950 or just leave a message for us to ring you back. We are even happier to receive an email on [info@kurow.org.nz](mailto:info@kurow.org.nz) with your details. We constantly update our versions as we receive new numbers. There is also lots of space to record the contact details of your loved ones from out of the area.

### **BUGLE PIECES:**

Have you ever written an article you'd like published, maybe a poem or even a story...please let us know, we'd be happy to consider your piece for the Kurow Bugle! We are loving all the pieces that we've been given so far and hope that you are too!

### **BREAD BAG TAGS:**

Please save your bread bag tags and drop in to Feliz, Gifts & More, Kurow Information Centre or Kurow Holiday Park.

### **WOMENS GOLF, WEDNESDAYS IN KUROW:**

If you would like to play golf or learn to play golf we meet every Wednesday morning at 9.00 am and you are most welcome to join us. We have extra golf clubs available. For more information give either Kate, Tracey or Janeen a call:

Kate Gibbon 0212266945  
Tracey Scott 0274379469  
Janeen Benny 0274200302

### **PHOTO NAMES:**

Apologies for not naming those on the front page of the last Bugle. First photo: Cal Reid, Nikki Ormandy, Seanne McGregor, Lisa Crawford and Peter Ellis (members of the Waitaki Valley Community Society and Kurow Information Centre staff).

Second photo: Peter Ellis and Karen Marshall (Compliance Officer Waitaki District Council)

Third photo: Seanne McGregor

If you have any old photos that are local and you're unsure of the names of the people in them feel free to forward them to me and I can pop them in the Bugle, there is a wealth of knowledge out there and someone may be able to help.

# Apply now for Meridian's Power Up Community Fund

At Meridian, we're committed to doing good things with our energy. To do good for people, and good for the environment.

So, we're proud to back local projects in communities around our wind farms and hydro stations with our Power Up fund.

With Power Up, your community has a say on what initiatives we support and fund. Managed by a panel of locals and Meridian staff, we're working together to build strong and sustainable communities.

Power Up Waitaki provides grants for projects in Twizel, Omarama, Otematata, Kurow, Hakataramea, Duntroon, Ikawai, Papakaio and Glenavy.

## How to apply

Applications for the next funding round are open until 26th April 2020.

For more information and to apply:

- visit [meridian.co.nz/powerup](http://meridian.co.nz/powerup)
- email [community.fund@meridianenergy.co.nz](mailto:community.fund@meridianenergy.co.nz)
- call 03 357 9732

## WANTED TO RENT

2 Bedroom House  
(with paddock for 2 horses  
if possible)  
Employed  
Good References

Phone  
Yolande  
027 393 5222

IF YOU HAVE TO CHOOSE  
BETWEEN BEING KIND &  
BEING RIGHT, CHOOSE  
BEING KIND & YOU WILL  
ALWAYS BE RIGHT



MER/0257D

## 2020 UPPER WAITAKI Returned and Services' Association Inc (UWRSA) Annual General Meeting (AGM)

Notice is hereby given that the 84th AGM of the Upper Waitaki RSA will be held on Saturday 21st March 2020 at 2.00pm in the back bar of the Kurow Hotel.

Agenda: Minutes of the 84th AGM, President's Report, Annual Accounts, Election of Officers and Committee, Appointment of Auditor/Reviewer.

*Karen Hofman*  
Secretary  
027 208 2669  
[karen.hofman@xtra.co.nz](mailto:karen.hofman@xtra.co.nz)

NEXT ISSUE: 25th *March* 2020 COPY IN: 12pm 20/03/2020

email: [kurowbugle@gmail.com](mailto:kurowbugle@gmail.com) phone: **03 4360 950**

or post it to: Kurow Museum & Info Centre, 57 Bledisloe St, PO Box 56, Kurow.

*We look forward to contributions from the Community to interest readers*



## **SPRING SPECIAL**

10m Green Black Poplar **only**  
\$500

Old Man Pine is also available

**Ph 027 3388 513**

**A/H 03 4264 963**



## **ONE SMART COFFEE**

Available for events and gatherings

Phone Linda on 027 27 69857



## **THE GARAGE DOOR CENTRE**

Distributors of

**DOMINATOR**

Garage Door Systems

New Sales & Service

In the Waitaki Valley

Call Brian **0274 335 299**

**MB**  
Therapeutic  
Massage

Margo Barrett dip. atm  
Remedial Massage Therapist  
0221 0221 56  
[margo@mbmassage.co.nz](mailto:margo@mbmassage.co.nz)

65 Bledisloe St.  
Kurow 9435.  
Waitaki, Otago  
[www.mbmassage.co.nz](http://www.mbmassage.co.nz)

## **WANTED**

Double beds and/or  
mattress' wanted for pet beds

Phone or text

021 022 90557





*Campbells Butchery*  
*quality meat and smallgoods*  
*available at*

*Kurow Foodcentre and*  
*West Road On The Spot.*

For private processing of your  
cattle and sheep contact Steve on  
**03 434 8780 Ext. 4**

## **Carpet Cleaner Hire** **Now in Kurow**



**\$45.00 for 4 hours**  
**\$55.00 for 8 hours**  
**\$75.00 for 24 hours**  
**\$20 for 1L of carpet shampoo**

*All hires have a \$20.00 bond*

For any enquiries phone  
Justine or Puna  
**03 4360 988 or 027 408 7482**

## **AVAILABLE AT THE** **INFORMATION CENTRE**

- Photocopying
- Binding
- Colour printing
- Laminating
- WIFI for free
- Community Car bookings
- NZTA services
- Passport forms
- Bus/Activity bookings

**PHONE 4360 950**

## **Lakeside Laundries**

Behind Otematata Hotel

Open 24/7



Soap dispenser  
Money change machine  
4 washing machines/4 dryers  
All welcome

*Owner Debbie Smith 027 229 4376*



KUROW GOLF CLUB

# WOMEN'S GOLF OPEN

WEDNESDAY 1ST APRIL

KUROW GOLF CLUB, 5 MANSE ROAD, KUROW

9.15AM MORNING TEA

10AM TEE OFF

ENTRIES CLOSE  
SUNDAY 29TH MARCH

\$30 ENTRY FEE  
(INCLUDES 2'S)

PLEASE SEND ENTRIES (I.D  
INDEX) TO  
**KATE GIBBON** 0212266945  
KATEGIBBON@HOTMAIL.COM

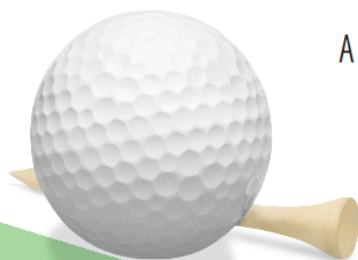
HANDICAP 0-42 TWO  
DIVISIONS

CARTS AVAILABLE

OR  
**TRACEY SCOTT** 0274379469  
OR (03) 4360045

🏆 MAIN PRIZE 🏆  
BEST NETT OVER THE FIELD

AMAZING PRIZES, FABULOUS  
SPONSORS!





# Two positions available

## Part-time teacher

We are seeking an ECE or Primary teacher (or student teacher) to join our pool of teachers part-time during school hours.

Flexible days of work amidst our supportive team of 12 staff incl 9 qualified teachers. Enquire now to find out more.

## Caretaker Role

We have casual work available for an all-round handyman. Gardening work and general maintenance required. Work times flexible in evenings or weekend to suit applicant.

## Farewell Jim and Bridget

We want to wish Jim and Bridget all the very best for their move after 20 years + of service as our caretaker. We enjoyed having them join us for a boogie and singing before a morning tea with our children. You will be missed.



## Honey for sale

# \$18 for 1kg

Pop into preschool office

Waitaki Valley Preschool – [manager@wvp.kiwi](mailto:manager@wvp.kiwi)  
(03) 436 0999 – Open between 8.30–3.30pm weekdays



## **River-T Vine News**

The vineyards in the valley have been in a frenzy netting their vines to protect their crop from hungry birds. The ripening of the grapes means increase in sugar levels much to the delight of waxeyes and other feathered creatures, though if we were to pick one and eat it right now we would certainly screw our face up and spit it out. Not ripe enough for us at this stage.

Harvest has started in other areas of New Zealand, bringing a closure to their 2020 vintage.

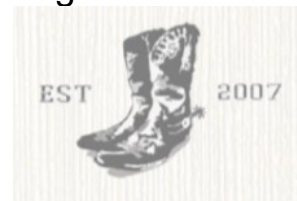
The Waitaki Valley region is usually the last to harvest in New Zealand. We are a cool climate region and it takes all of Autumn to ripen our grapes  
Harvest looking like end of April.

Lastly we would like to welcome new neighbours . Te Kano Estate Central Otago have purchased the Pasquale/Kurow Winery. This is great for our wine region as the winery will kick back into action and the vineyards will be brought back to life producing wine again.

River-T Cellar door open every day **10am – 6pm**

Cheers Karen

Email: [karen@rivert.co.nz](mailto:karen@rivert.co.nz) or ph /txt 021 1908875



## **Tuition**

Disappointed with your teenager's school results last year? Know that, with a little help, they could do better?

This year, I am offering tuition in: study skills and motivation, literacy/ reading strategies, essay writing, English and History as well as in English as a Second Language. Many of these are generic skills that can be applied across all secondary school subjects.

My previous experiences include most recently, Head of the English Department at WBHS and Literacy Coordinator, as well as Workplace Literacy Coordinator at Literacy Aotearoa, and Education Tutor for the Corrections Department. I have qualifications to teach both English and History to Scholarship level as well and hold a Masters Degree.

Feel free to contact me for more information.

Lynda 0275016534  
[lyncostello2017@gmail.com](mailto:lyncostello2017@gmail.com)





# Houses for Rent



We have 3&4 bedroom family houses available for short/long term rent. If interested in living on an English historic estate where peace & quiet is appreciated, please contact us on:

**021 104 5506**

[Admin.campbellpark@campbellparkestate.co.nz](mailto:Admin.campbellpark@campbellparkestate.co.nz)



## CREATIVE NZ COMMUNITIES GRANT

Do you have an idea for a project that might support community involvement in the arts, engage young people in the arts or create cultural diversity in the arts? You can apply for funding from the Creative NZ Communities Grant.

Applications are now open and must be received by 5pm Tuesday 24 March 2020.

Application forms and information are available from Waimate Information Centre, 15 Paul Street, Waimate and at [waimatedc.govt.nz](http://waimatedc.govt.nz).

Specific enquiries can be made to the Grants Administrator on 03 889 7771. Accountability forms for previous funding must have been completed.

Waimate District



P. +64 3 889 0000 | E. [council@waimatedc.govt.nz](mailto:council@waimatedc.govt.nz) | W. [waimatedc.govt.nz](http://waimatedc.govt.nz)



from Kurow Flower Show Committee

Thank you for the wonderful support with attendance and entries in the recent February Flower Show.

It was a great effort with 505 entries plus the marvellous entries from the children and the terrific display of quilts from the Quilting group.

We are glad you all enjoyed the afternoon tea.

Congratulations to all the prize winners and we look forward to the 2021 show.

Convenor Janet McGregor



Waitaki Valley  
Community Vehicle Trust

PHONE

**4360 950**

TEXT

**027 282 0615**

## WAITAKI VALLEY COMMUNITY CAR

We would like to acknowledge Jim Sutherland as a Community Car Driver who has always gone the extra mile for his passengers. All the best in your new community Jim- you will be missed by us all. Did we mention you need to find three people to replace you?



## WAITAKI VALLEY SCHOOL HANGI

Waitaki Valley School would like to invite you to their upcoming school hangi.

The hangi will be held on Thursday 19th March. It will be lifted and served around 12.30pm.

Anybody from the school and community are welcome to attend AND to help out on Wednesday the 18th March for hangi preparations.

Please let the school know by Monday 9th of March if you would like to help on the preparation day and/or if you would like to attend the hangi so we have rough numbers to help the school with food numbers.

Please RSVP to the Waitaki Valley School office at [office@waitakivalley.school.nz](mailto:office@waitakivalley.school.nz)

# Kurow

# ECLIPSE

5 Litres *Our Price*

# \$1229



*Plus a  
RM Williams  
Rugby Jersey*



***By the Big Blue Cross***

# ***Veterinary Centre***

## ***Phone 03 436 0567***

# SECTION FOR SALE IN KUROW

Area 1.1780 Ha Lot2 DP 336154 of  
10 Cattle Valley Road, Kurow

Situated on the corner of Cattle Valley Road  
opposite Waitaki Primary School. Mainly flat land,  
very sunny location and ready to build on.  
Services to the gate. Offers over \$225,000.

Enquiries please phone  
Marion 027 455 9399 or Ally 027 488 3058



## **Kurow Netball Club Registrations for the 2020 Season**

**Junior Registrations:** Monday 16th March, 3-4pm

**Senior Teams Trials/Registrations:** Thursday 19<sup>th</sup> March  
7-8pm at the Waitaki Valley School Gym

*This is for registering for playing on a Saturday in Oamaru.*

*Any questions/queries please contact  
Victoria Laughton 027 643 0212 (Juniors) or  
Anna Haugh 027 291 5416 (Seniors)*

# Kurow Medical Centre

8 Wynyard St, Kurow  
P: 03 4360760 F: 03 4360780

E: [info@kurowmedicalcentre.org.nz](mailto:info@kurowmedicalcentre.org.nz)  
W: [www.kurowmedicalcentre.org.nz](http://www.kurowmedicalcentre.org.nz)  
[www.facebook.com/kurowmedicalcentre](http://www.facebook.com/kurowmedicalcentre)

**Providing 24/7 health care and support to  
the people of the Upper Waitaki and Mackenzie**

## **Kurow Medical Centre and its satellite clinics in Twizel (Mackenzie Health Centre Private Clinic) and Omarama (Community Hall)**

**are proud to offer our registered and casual patients the following services**

- \* Ultrasound performed by a qualified technician (great for minor fractures, gall stones, kidney stones, heart and lung problems, foreign bodies, blood clots, detecting early pregnancy and much more!)
    - \* Minor surgery
    - \* Vasectomies
  - \* Mole checking and removal
  - \* Steroid injections
  - \* Venesection
  - \* Aviation, workplace and driving medicals
  - \* Botox for wrinkle reduction
  - \* Workplace health screening
  - \* Counselling
  - \* Travel advice & vaccination
  - \* Spirometry to diagnose asthma and COPD
  - \* Ear syringing
  - \* Hearing and sight tests for adults and children
  - \* Before school checks
  - \* Liquid nitrogen for warts, verruca's and skin lesions
  - \* Cardiovascular risk assessment and diabetic checks (funded for eligible patients)
    - \* Childhood immunisations
    - \* Postnatal and six week baby checks
  - \* Seasonal flu shots and shingles vaccine (funded for eligible patients)
- AND MUCH MORE**

**GP consult fees: Under 14 Years FREE; Adult \$40.00  
Care Plus - Free to eligible patients only**

We also offer the following services from external Healthcare Providers:

- Podiatry and Ear Health (Kurow only)
- Physiotherapy, Acupuncture and Massage (Kurow and Twizel)
  - Reiki and Reflexology (Twizel only)

### **OPENING HOURS**

Kurow: Monday to Thursday 8:30am to 5:00pm

Omarama: Tuesday 8:30am to 5:00pm

Twizel: Monday and Friday 8:30am to 5:00pm,

Tuesday Wednesday Thursday 9am to 3pm      Saturday 10am to 1pm

Please note: We provide 24/7 on call after hours cover by our doctors and PRIME nurses for all our registered and casual patients

**For more information or an appointment please contact us on:  
KUROW: 03 4360 760    TWIZEL: 03 976 0503**





WAITAKI'S FINEST WINES

## **CELLAR DOOR OPEN**

**7 DAYS 10AM – 6PM**

- Wine Tasting
- Gifts beautifully wrapped and ready to go
- Bottle sales. (Not only River-T but 90% of all Waitaki Valleys Wines are stocked)
- Full range of Scotts Beer
- Over 40 Waitaki Wines to choose from for a glass pour
- Log fire to warm you up on those 'un summer' days
- Beautiful leaf tea and barista coffee
- Slices, muffins, cookies, cakes, nachos, bagels, salads, platters
- Large groups a specialty....(ask for the famous Posse Platter)

Want to give us a heads up you are coming...Phone or txt Karen 021 1908875, otherwise just rock on up.

**WE WARMLY WELCOME YOU  
CHEERS FROM THE RIVER-T TEAM  
WWW.RIVERTESTATE.CO.NZ**

**NZ FARMERS LIVESTOCK**

## Working with Farmers for Farmers

NZ Farmers Livestock offer a complete Stock and Station Association Service, from Private Treaty Sales, Public Auctions and On Farm Auction Sales.

We can also provide a simple financial package for client's needs.

*Ask Regan today as to how he can help your business grow.*

**Regan Laughton**

Livestock Agent

Mobile: 027 440 6722

Email: [regan.laughton@nzfl.co.nz](mailto:regan.laughton@nzfl.co.nz)

NZFL is proud to be supporting

 **cure kids**

**MyLiveStock**

Website / Mobile / App

## BARNARDOS EARLY LEARNING

Barnardo's Early Learning Home Based Care for children under 5 here in the Waitaki Valley.



I offer a safe, stimulating and nurturing environment where children are free to learn through activities and play.

I am passionate about nature and art and sustainable practices.

Please contact

Jo 027 253 7291

or

Debbie 027 202 3029

## MENTAL HEALTH SUPPORT GROUP

The Waitaki Mental Health Support group meet twice a month in Kurow and seven times a month in Oamaru.

We meet to give and receive Peer Support in the face of or surviving mental distress.

Phone or Text 027 282 0615 for more details.

  
**Feliz**

18 Bledisloe Street, Kurow  
03 436 0575

Gifts & More

NZ Post

Bike Hire

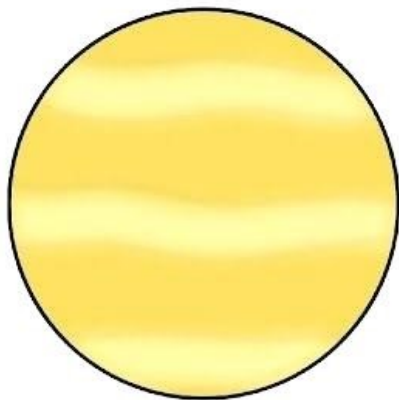
Afterpay

Mon-Fri 8.45am-5pm

Sat-Sun 10am-2pm

[www.feliz.co.nz](http://www.feliz.co.nz)

# KIDS STUFF



Venus is the second planet from the Sun. Because Venus is so similar to Earth, we sometimes call it Earth's "sister planet." Most of Venus' surface consists of gently rolling plains. It is the brightest "star" in the sky.

Venus

## VIDEO GAME WORD SEARCH

L V N O Q S C L H R P G I M J M E  
M O N O P O L Y I B X U V I I O M  
G W D W M L Z X M N H Y T N B L A  
C K Y W I I S K J O X Q A E I X R  
B U S L F T G G N I C A R C Q P I  
K D A E Y Z J V D T U P O R O N O  
V X M V D A S K U A Q L V A A B X  
F A E R G W F J L T B Y M F D F C  
K O G A L C H K E S P E G T C E G  
N R E M N G N B G Y G E A S U G N  
A J H E I V A G O A D O M Q J G E  
M E C O N T R O L L E R E O D F Q  
C P K Q T F C D Z P Y X B O X A Y  
A M T K E Q A S E M A G O L U M L  
P I J A N M D K W T M C Y U O S H  
M W N G D W E Z J R K X O D E N I  
V G W G O Q P S C H O C L K S B O

ARCADE  
XBOX  
GAMEBOY  
LEGO  
MONOPOLY



GAMES  
PLAYSTATION  
MINECRAFT  
MARVEL  
RACING



NINTENDO  
WII  
MARIO  
PACMAN  
CONTROLLER



## GEOCACHING

Looking for an outdoor activity for the kids? Have some time to spare and need a destination? Then check out geocaching.

Geocaching is described as a high-tech treasure hunt. The objective is to find a geocache, a waterproof container with a log book and perhaps some small items to exchange. The geocache creator hides the container in the outdoors, then posts details on a geocaching website.

To play, you use a geocaching website ([www.geocaching.com](http://www.geocaching.com)) or app to select a cache you'd like to find. They will list a description, some map coordinates and possibly cryptic instructions for locating the container.

When you find the cache, record your find in the log book, and later record it on the website or app. The cache may also contain a number of small trinkets. You may take one with you if you have one to leave in return.

There are over half a million caches in 100 countries around the world. Locations range from urban to mountain tops.

# KUROW & DISTRICTS

## FLOWER & PRODUCE SHOW 2020

### RESULTS

#### **Flowers: Margaret Tait Munro Memorial Cup:**

1<sup>st</sup> Indi Gard; 2<sup>nd</sup> R & L Wild; 3<sup>rd</sup> June Taylor



#### **Thea Chapman Memorial Trophy:**

Most Points & Champion Bloom: June Taylor

Decorative Cup: 1<sup>st</sup>: Bridget Morland; 2<sup>nd</sup> Phyllis Emslie

Most Outstanding: Phyllis Emslie

#### **William Milne Cup – Fruit & Vegetables**

1<sup>st</sup> Bill Wallace; 2<sup>nd</sup> Bridget Morland & Ian McGregor

Most Outstanding Fruit: Carmen Slee

Most Outstanding Vegetable: Jo Warwick



#### **Dunstan Cup for Baking**

1<sup>st</sup> Whalan Lodge; 2<sup>nd</sup> Alan Sharplin

Most Outstanding Exhibit: Alan Sharplin

#### **Jams, Pickles & Sauces:**

1<sup>st</sup>: Whalan Lodge Most Outstanding exhibit: Whalan Lodge

Mt Menzie Trophies for Photography:

1<sup>st</sup> Dot Duffy; Most Outstanding Photo: Amanda Thwaites

#### **Handcraft:**

1<sup>st</sup>: Dot Duffy Most Outstanding Exhibit: Elaine Chilton

**Youth Photography:** 1<sup>st</sup>: Bessie Hayes 2<sup>nd</sup>: Hailie McSkimming

Most Outstanding Exhibit: Bessie Hayes

**Youth Baking:** 1<sup>st</sup>: Bella Green, 2<sup>nd</sup>: Jayden Morland

**Most Outstanding Exhibit:** Macey Morland



#### **Youth Section Most Points:**

1<sup>st</sup>: Jayden Morland, 2<sup>nd</sup>: Bella Green 3<sup>rd</sup>: Bessie Hayes

Secondary: 1<sup>st</sup>: Macey Morland

Pre School : 1<sup>st</sup>: Holly, 2<sup>nd</sup>: Lauren, 3<sup>rd</sup>: Lillian

**Smith Cup Youth Sections:** Macey Morland

**Belworthy Cup: Most points in the show:**

**Dot Duffy**





**Plunket**



meridian

**THE KUROW PLUNKET COMMITTEE  
WOULD LIKE TO INVITE**

*The Kurow community and friends to  
the official opening of the new safety  
fence at the Kurow Plunket rooms.*

**SUNDAY 29<sup>TH</sup> MARCH 2020 AT 3PM**

*Tea, coffee and afternoon tea will be served  
as well as the cutting of the cake.*

Please rsvp to Emma Nowell

0274244147 or

[ejv.nowell@gmail.com](mailto:ejv.nowell@gmail.com)



**PlaceMakers**<sup>®</sup>

# Bathrooms



Wendy, Amy and the team  
have over 40 years local  
experience in Bathrooms  
They can help you with  
**EVERYTHING**  
from start to finish  
Call in today!  
19 Humber St, Oamaru  
**03 433 0460**



**PlaceMakers**<sup>®</sup>

Together we're building  
New Zealand





# Rural Lifestyle & Property Sales

**KITTY CULP**

Licensed under REA ACT

027 346 0846

kitty@oaoamaru.nz

**ONE AGENCY**  
THE PROPERTY SPECIALISTS



## Kurow Golf Club Opening Day

7th April @ 12.30pm

All welcome

Pot luck tea

# THANK YOU!



**Farmlands Kurow would like to thank the community for getting behind our Purina Pro Plan fundraiser.**

\$5 from every bag sold was donated to our local Collie Clubs during our June to September 2019 sponsorship round. With the great support of the community Farmlands Kurow sold 1024 bags!



**Tarras Collie Club**

**\$1,440**

**Omarama Collie Club**

**\$1,440**

**Kurow Collie Club**

**\$2,240**

Thank you to Purina for offering us the opportunity of this fundraiser.





# THIS MONTH SUPPORT THE KUROW RUGBY CLUB!

Farmlands will make a **\$5 donation** to the Kurow Rugby Club on every bag of Pro Plan Performance with Optipower 20kg or Pro Plan Performance Extreme 32/30 18kg purchased.

**1  
BAG  
FREE\***

when you  
buy 3

**2  
BAGS  
FREE\***

when you  
buy 6

**4  
BAGS  
FREE\***

when you  
buy 12

**8  
BAGS  
FREE\***

when you  
buy 24

**Farmlands Kurow**  
34 Bledisloe Street  
(03) 436 0917  
kurow@farmlands.co.nz

**Together  
stronger™**

**Farmlands**  
co-operative

\*The Bags will be charged out at \$109.00. The Free bags will not be invoiced on your account. Only valid at Farmlands Kurow during March 2020.



# carpetcourt

## Massive Madness flooring

# SALE

10% to  
**50% OFF**  
Selected  
Flooring\*

[www.carpetcourt.nz](http://www.carpetcourt.nz)



**\$2 MILLION  
RHINO CARPET  
CLEARANCE**



**18  
MONTHS**  
No Interest &  
No Payments\*\*



\*Offer is valid until 29/03/20 on selected ranges and selected colours or while stocks last. Carpet is sold in lineal metres. Stock will vary by store. Quantities are limited and no holds or reserves on clearance product allowed. Clearance items are sold on an as-is basis without a manufacturing warranty however the Consumer Guarantees Act will still apply. We reserve the right to adjust prices without notice if necessary and we reserve the right to correct any errors. \*\*Q Card lending criteria, fees, terms and conditions apply. See in store for full details.

# Movies at Whalan Lodge



**2pm start time - All Welcome**  
**Transport available if required**



*Thursday 12th March*

*Seven Years in Tibet*  
*(Brad Pitt)*

*Thursday 19th March*

*Nancy Wake*  
*(Noni Hazelhurst)*

*Thursday 26th March*

*Law Man*  
*(Burt Lancaster)*

*Titles may be subject to change.*

Fill in the puzzle so that every row across, every column down and every 3 by 3 box contains the numbers 1 - 9

						7		
3	9		7		8	5	4	
8	6			5	4			
9		6		4	7			
1	3	4	2				9	
	5	8	1		9			4
5	4		9	2	3			8
				7		9		5
					1		3	

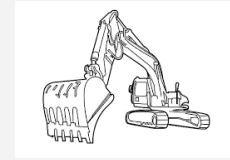




## DIG IT MACHINE HIRE

**0800 716 052**

**Excavator Dry Hire**



We have several sizes of excavator available up to 14 ton  
Transporter and truck hire also available

**Call for rates and availability**



❖ Ag Lime

❖ Track Rock

Duntroon

Freecall: **0800 002 639**

**Superior Products @ Competitive prices**

Mobile: **0274 383 595**

*A division of BR Jones Contracting Ltd - Diggers, Bulldozers, Truck Hire and more.  
Specialising in earthmoving, track work, effluent ponds, irrigation ponds and dairy conversions*



**PLEASE CONTACT BEN FERGUSON FOR  
TEST RESULTS, PRICING  
AND LIME ORDERS**

**0274 742 899**

**WINTERBURGLIME@GMAIL.COM**

## **Registered Electrician**

- For all things electrical
- Large or small
- Domestic and commercial
- Prompt service
- Reasonable rates
- Free quotes

Try the friendly team at **ELECTRO SPEC 2007 LTD**

**Phone Mark 027 264 0404**



# NIGEL GRANT FENCING

Specialist in Sheep, Deer, Cattle,  
Post & Rail, Yard, Electric & Pivot



**NIGEL GRANT**

**Ph 027 436 0964**

**A/H 03 436 0964**

**MICHAEL  
WILLS**  
CONTRACTING LTD



*Operating in Waitaki & Haka Valleys  
for over 25 years.*

*Local knowledge, experienced operators,  
modern machinery*

*Silage, Balage, Direct Drilling, Maize & Fodder Beet Planting*

**Ph. 027 221 0826**  
*to discuss your contracting needs*



**Waitaki Spraying Ltd**

**Chris Horn**

**P: 021 2702809**

**E: [mail@waitakispraying.co.nz](mailto:mail@waitakispraying.co.nz)**



**Brett Green**

**021 209 4809**

**(03) 4360 229**

**Baling**

**Wrapping**

**Tube and Individual**

**Fencing**





# J Rapsey

FENCING



Phone:

027 786 0879

Email:

john.rapsey14@gmail.com



**KLAM Limited**  
**Home Improvements & Repairs**

Rob Wilson

027 473 1430

rj531966@gmail.com

All areas covered within the Mackenzie Country and Waitaki Valley

What do you call a man with a seagull on his head?  
Cliff...

What do you call an Irish woman leaning against a wall?  
Eileen...

What do you call an Irish woman not leaning against a wall?  
Noeleen...

What do you call an Irishman with a gun?  
Éamon...

What do you call a man with a shovel?  
Doug...

What do you call a man with no shovel?  
Douglas...

# RIVER CAFÉ



**Delicious Burgers**  
**Fish n Chips**  
**Robert Harris Coffee**  
**Home Baking**  
**Ice creams/Drinks**  
**Friendly Service**



Phone orders welcome!  
**03 436 0820**



WTK Contracting Ltd  
RD 1 K  
Oamaru 9494  
0279663636

**Tree Felling- Logging**  
**Land Clearing**  
**Cartage-Firewood**

**Truck and trailer FW logs**  
Pine **\$1200**  
Poplar **\$1200**

**Firewood**  
**WINZ QUOTES AVAILABLE**  
Split Pine **\$65m3**  
Split Poplar **\$65m3**  
Wet Blue gum **\$75m3**

Delivery charge may vary pending location

## Necessities

## Health & Beauty

65 Bledisloe Street, Kurow  
03 4360883

- ✓ Prescription collection
- ✓ Hair, Nail & Skincare
- ✓ First Aid Supplies
- ✓ General Medicines
- ✓ Vitamins
- ✓ Sunscreen, hats and glasses
- ✓ Jewellery, gifts & much, much more

*Call in and see us today!*

**Open Mon - Fri 11am - 4pm**

**Residential • Commercial • Farming**  
**Business • Motels • Development**

Steve is now specialising in Real Estate in the Waitaki Valley, he has resided in Otematata for the past 9 years.

Steve enjoys helping people build a better future; whether it's moving up the property ladder or buying their first home, business or commercial venture.

Steve brings a huge wealth of experience in all aspects of property - big or small! From Residential to farms

Steve is the agent to call.

### Steve Dalley

M 021 768 719 P 03 434 3347  
steve.dalley@pb.co.nz  
pb.co.nz

Hastings McLeod Ltd Licensed REAA 2008



**Property Brokers**

Proud to be here



purewash  
spot free rinse

window cleaning

NO CHEMICALS OR SOAPS

NO WATER SPOTS

100% PURE WATER

gift vouchers available

PHONE MARK & HELEN GURNETT

027 689 1428

# 0800 MR PAINTER LTD

(Trade Qualified Painters & Decorators)

- ★ Roof Painting
- ★ Interior & Exterior Painting
- ★ Wallpapering
- ★ Plasterboard Stopping

*Call or Text Chris*

*0800 677 246*

*or*

*027 437 4367*



# WAITAKI GLASS AND GLAZING

*"Craftsmen in Glass"*

*Up the Valley once a week—We won't be beaten on quality or price*

*"Experts for replacement double glazing with over 45 years experience,  
10 years unconditional guarantee on labour and materials"*

**CALL TODAY—FREE QUOTE**

**Phone 03 437 2448 03 434 1440 or 027 434 1010**

waitakiglass@gmail.com

DeGeest Yard, 3 Main North Road, Oamaru

## PUNA KERR SHEARING



For all your shearing  
crutching and tailing requirements

Phone Puna and Justine on

**03 4360 988 or 027 408 7482**

**LOOKING AFTER THE LOCALS**



**QUALITY WORK  
GUARANTEED**

**FOR ALL YOUR EARTHMOWING NEEDS  
MACHINES AND  
COMPACTORS FOR HIRE**

**CALL GARY ON: 0274 373 668**

**OR (03) 4360 778**

**WEB: [www.garyhawkins.co.nz](http://www.garyhawkins.co.nz)**

  
**Survey Waitaki**  
surveying • planning • engineering

**Contact: Cameron Leckie**

Phone: (03) 434 8020

Cell: 021 496 780

Office: 27a Coquet Street, Oamaru

Email: [cameron@surveywaitaki.co.nz](mailto:cameron@surveywaitaki.co.nz)

Web: [www.surveywaitaki.co.nz](http://www.surveywaitaki.co.nz)

**OFFERING A WIDE RANGE  
OF SURVEYING SERVICES**

- Subdivision & Boundary Adjustment
- Land Development
- Precision Farm Mapping
- Easements
- Resource Consent & Council compliance





# LOCAL HANDYMAN



**For all jobs– from small jobs around the house to big jobs on farm**

- # Decking
- # Roofing
- # Farm buildings

# Kitset Sheds

- # Yards– new and repairs
- # Animal Shelters
- # House maintenance

**Contact Nigel Patterson 027 265 1325**

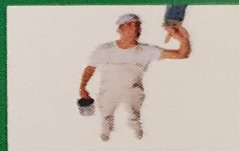
## Otago Rural Support Trust

When circumstances beyond your control lead to a rural business crisis — be it financial, climatic or personal — the Otago Rural Support Trust is ready to assist. Services are free and confidential.

**Phone 0800 787 254**



**Painting– Exterior & Interior**  
Phone Greg on 027 740 9552



## S. & S Property Care

Mowing, Pruning, Weed Spraying, Water Blasting, Housekeeping, Painting, Ride On Mower Service... All Property Maintenance.

**021774019**

Check out

**[www.kurow.org.nz](http://www.kurow.org.nz)**

For events, and to reacquaint yourself with the Valley or to read the Bugle Online



**SOUTHERN LAND  
CKL  
03 443 5577**

*Email [vergne@southernland.co.nz](mailto:vergne@southernland.co.nz)*

**Vergne Wilson  
RPSurv, B.Surv, NZCE (Civil)  
Registered Professional Surveyor**

Weekly in Kurow and surrounding districts.  
Please phone to discuss your project

***For all land related matters - free initial consultation***

**Subdivisions \* Boundary Relocations \* GPS Surveys \*  
Farm/ Property Mapping \* Contouring \* Vineyard Set out  
\* Land Development Engineering \* Resource Consents \***

## Hiflo Plumbing

### Mackenzie & Waitaki

For your local plumbing and heating requirements call us on:

**0800 277 888**

or email: [plumbing@hiflo.co.nz](mailto:plumbing@hiflo.co.nz)

- Plumbing
- Gasfitting
- Drainage
- Heating



### Mackenzie & Waitaki

We are your local rockgas supplier.

For more info please call us on:

**0800 277 888**

or email:

[rockgasmac@hiflo.co.nz](mailto:rockgasmac@hiflo.co.nz)





20TH ANNIVERSARY

# DANSEYS PASS TRAIL RIDE

FUNDRAISING FOR DUNTROON SCHOOL SINCE 2000

**5 TRACKS/150KM+**  
For all ages & stages

**14 • MAR • 2020**  
Bushy Creek Road

**TRACKS OPEN**  
9am

REGISTER NOW AT [WWW.DANSEYSPASSTRAILRIDE.ORG](http://WWW.DANSEYSPASSTRAILRIDE.ORG)